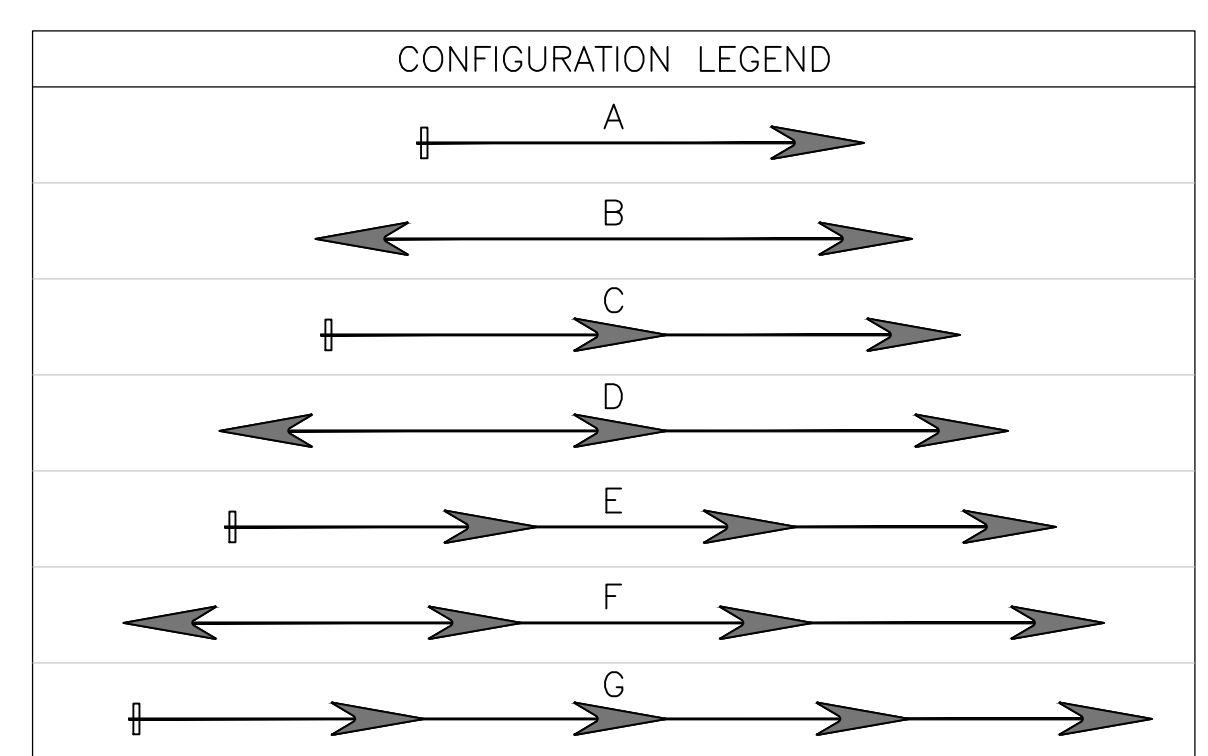


COLOUR CODE		
DIGIT	SYMBOL	COLOUR
0	BLK	BLACK
1	WHT	WHITE
2	RD	RED
3	SLV	SILVER
4	YLW	YELLOW
5	GRN	GREEN
6	PNK	PINK
7	ORG	ORANGE
8	BLU	BLUE
9	BRN	BROWN

PT LEGENDS	
SYMBOL	DESCRIPTION
→	STRESS END
←	DEAD END
[G] COLOUR B501	BAND TENDON COUNT
[G] COLOUR U501	UNIFORM TENDON COUNT
[G] COLOUR BMS01	BEAM TENDON COUNT
[G] COLOUR T501	TEMPERATURE TENDON COUNT
(C-J)	CONSTRUCTION JOINT
(P-1)	POUR SEQUENCE
—	ONE STRAND
—○—	TWO STRANDS
—◀—	THREE STRANDS
—□—	FOUR STRANDS
—◇—	FIVE STRANDS

BEAM TENDON BACK-UP BARS			
POUR	TYPE OF BAR	SIZE	QUANTITY
P-2		44"	60
		39"	40
		44"	33

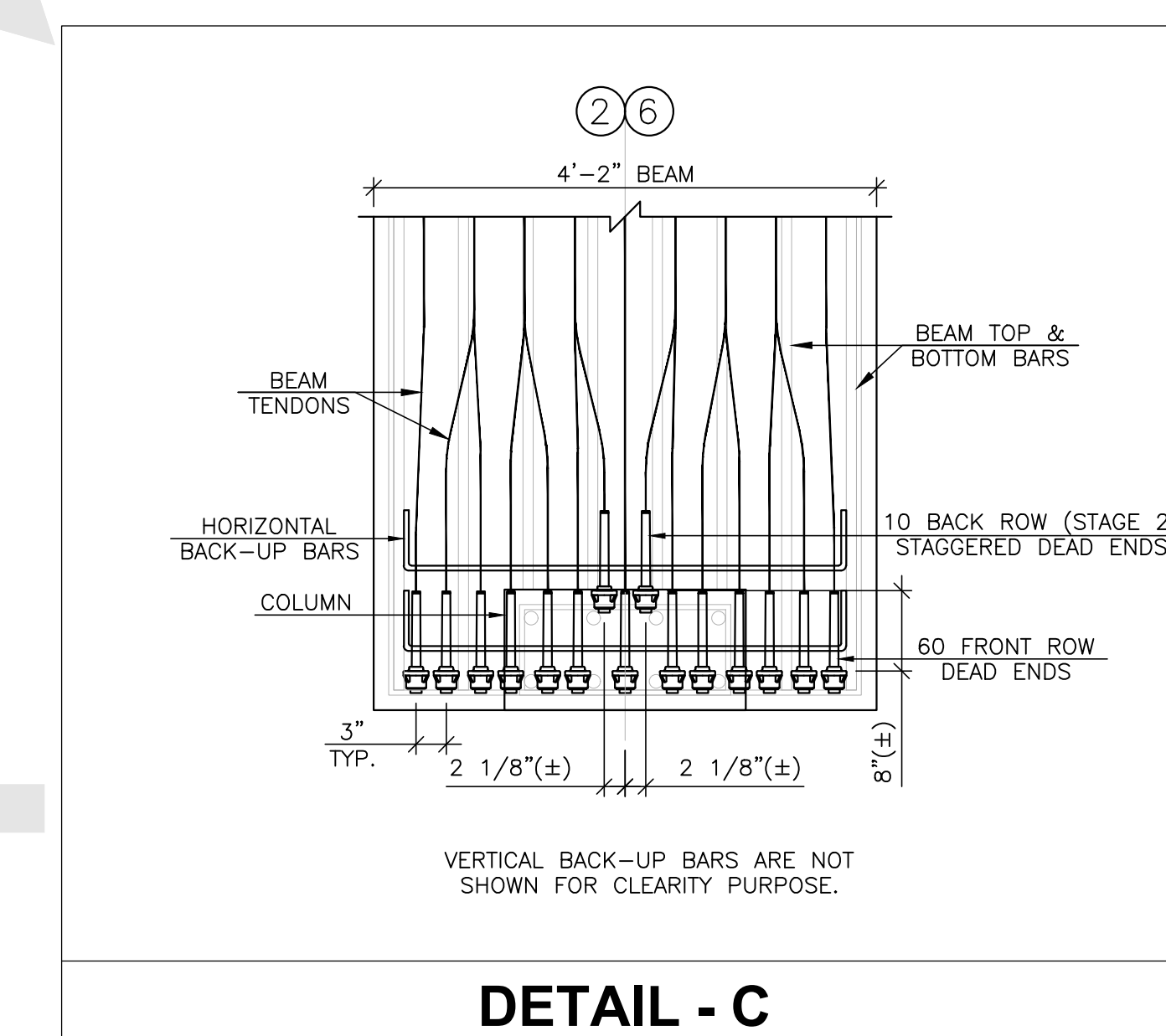
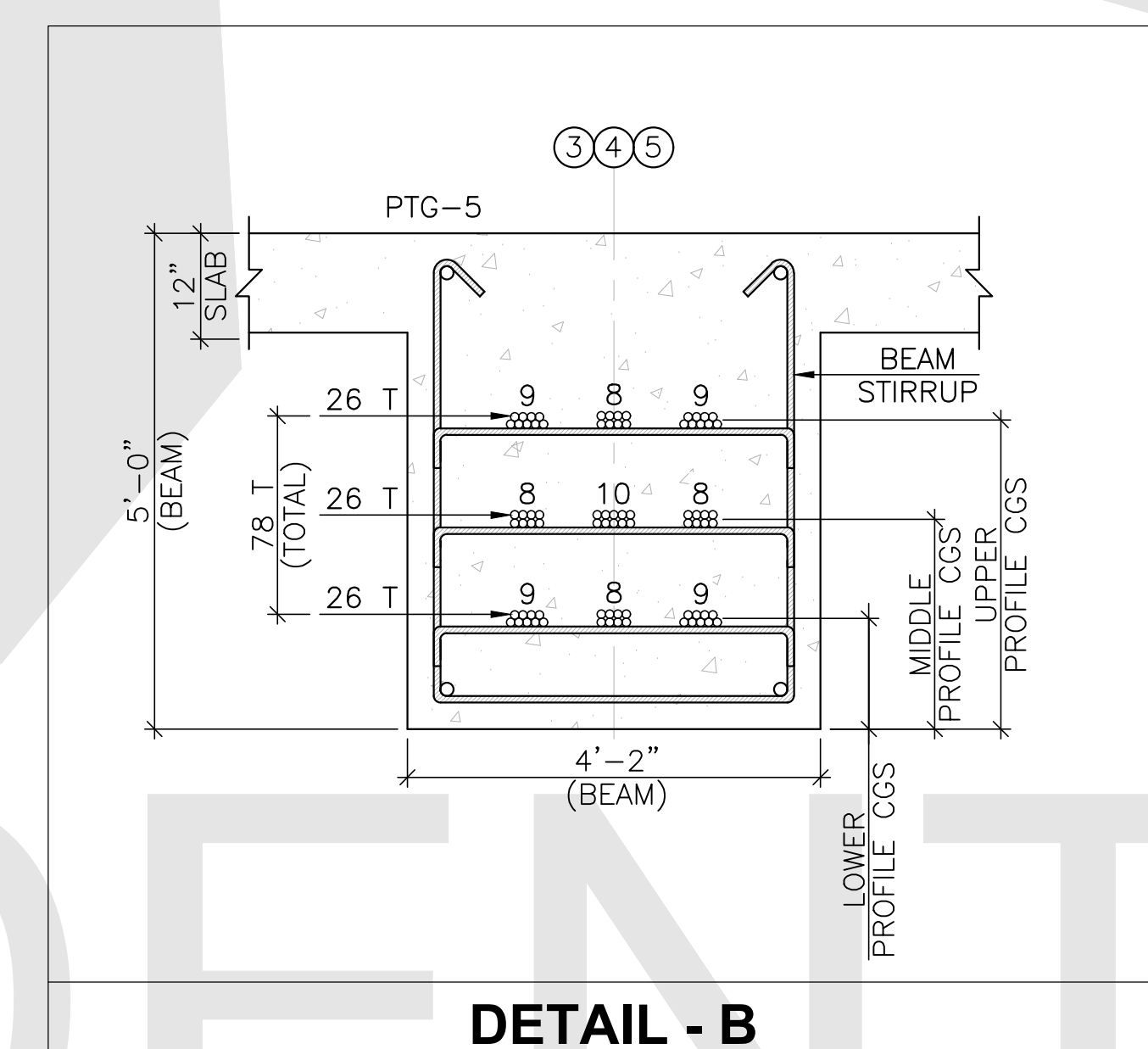
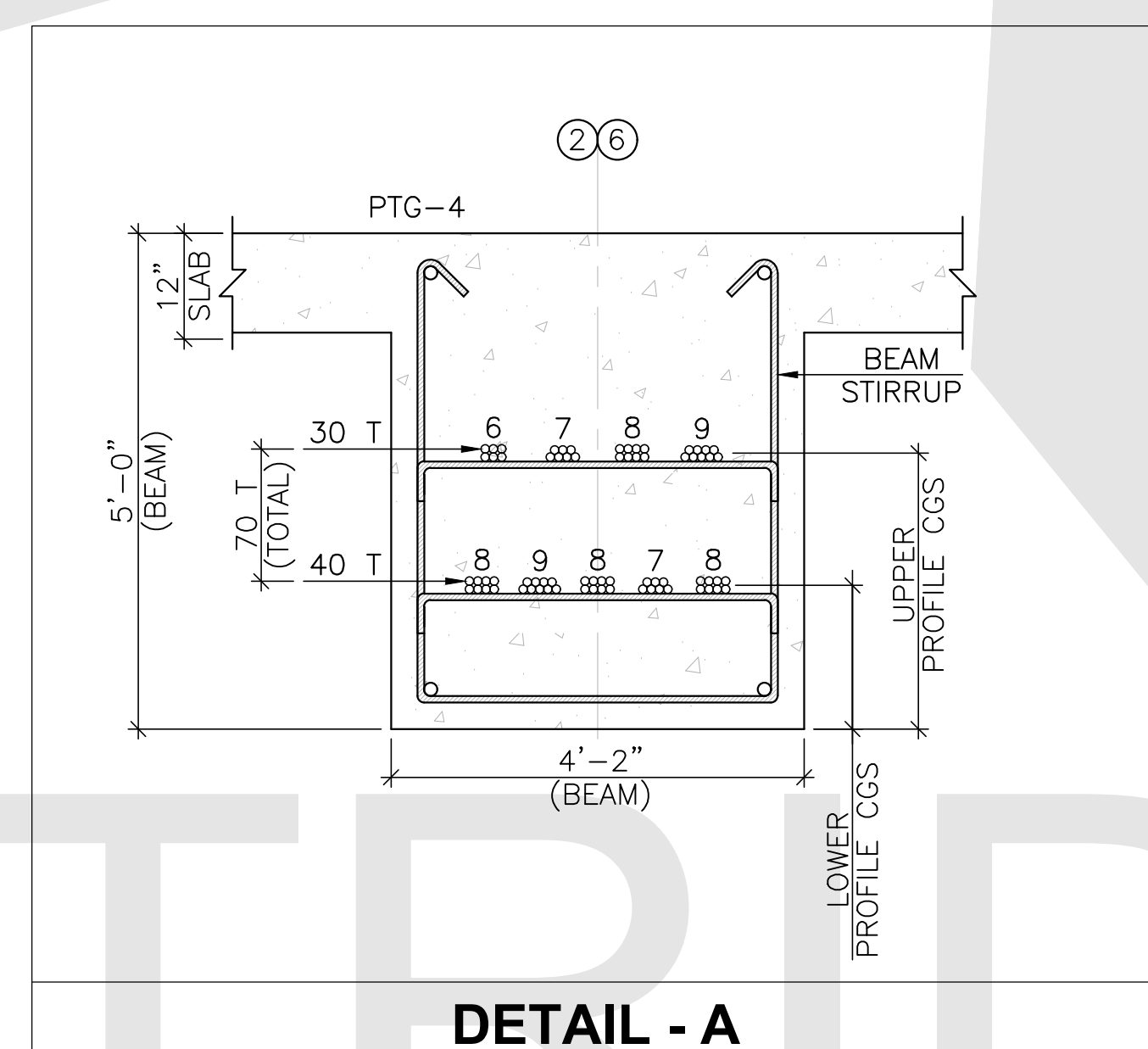
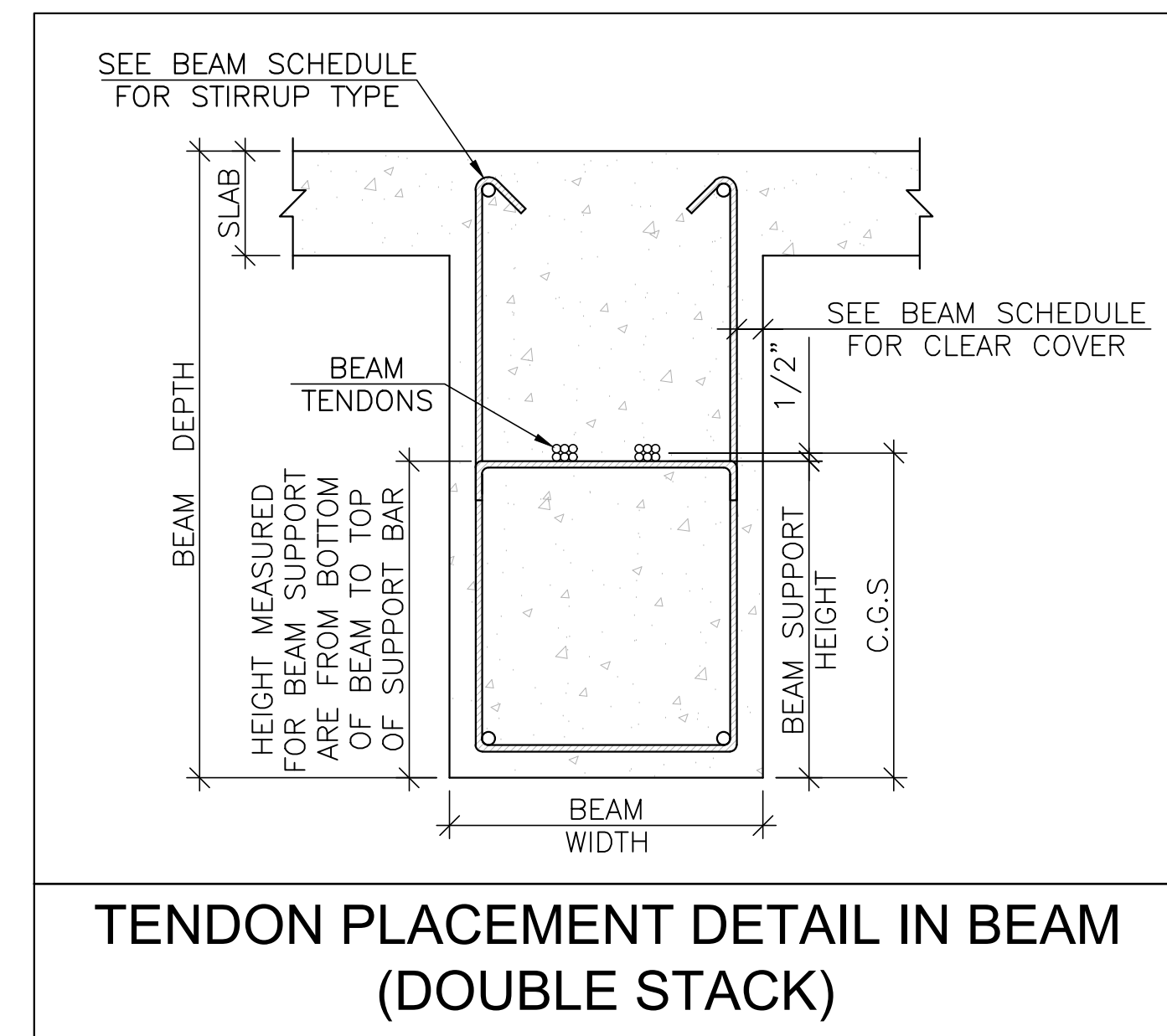
PLEASE NOTE 10% WASTAGE IS ADDED INTO TOTAL QUANTITY.



BEAM TENDON SCHEDULE					
TENDON COUNT	POUR	COLOUR CODE	CONFIGURATION	QTY. & CUT LENGTH	ELONGATION
BM1 - BM5	P-2	YLW-WHT-BLK	I - ->	374 x 75'-0"	5.5/8"

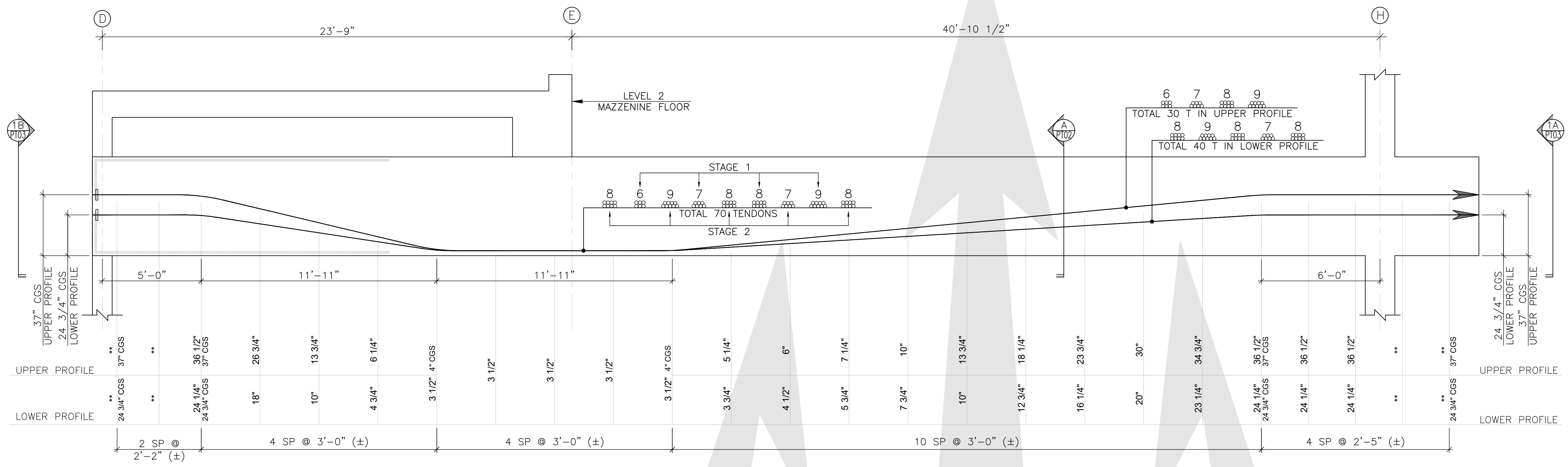
PLEASE NOTE: ALL GIRDERS NEED TO BE FULLY FORMED & SHORED UNTILL STRESSING OF ALL TENDONS.

BEAM TENDON LAYOUT LEVEL 2
12" THICK SLAB U.N.O.



- PLEASE NOTE :-**
- FOR ALL STRANDS SECTIONS & DETAILS, REFER SHEET "GENERAL NOTES & DETAILS".
 - BANDED TENDON GROUPS TO BE PLACED AT 12" O.C.(U.N.O).
 - UNIFORM TENDON GROUPS SHOULD BE EQUALLY SPACED AND MUST NOT BE EXCEED 4'-0" (±).
 - HOLD TENDON GROUPING 12" OFF PARALLEL TO SLAB EDGE WHILE MAINTAINING 12" DISTANCE BETWEEN SLAB EDGE & FIRST ANCHOR.

NOT FOR CONSTRUCTION

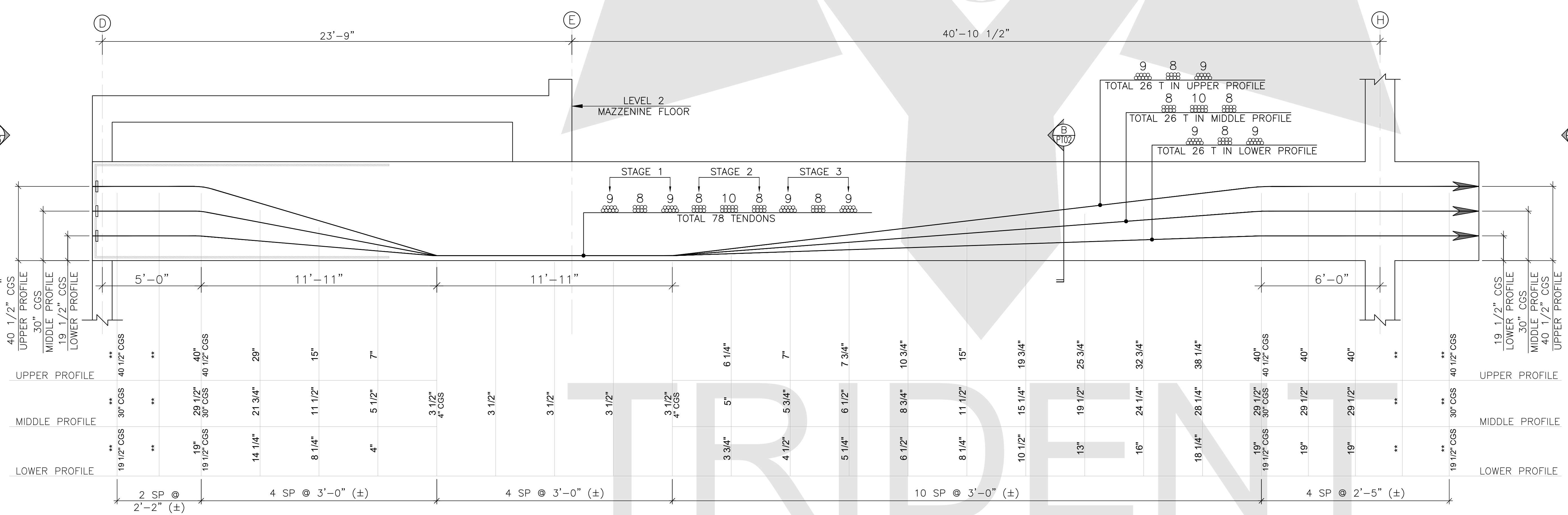


STAGE STRESSING FOR PT GIRDER 4 @ GRID 2 & 6	
STAGE 1 (30T)	STRESS 810 KIPS INITIALLY.
STAGE 2 (40T)	STRESS 1080 KIPS AFTER CONSTRUCTION OF LEVEL 6 SLAB.

1 BEAM PROFILE FOR PTG-4 (50"X60") AT GRID 2 & 6 (FORCE = 1890 KIPS) LEVEL 2

BEAM TENDON SUPPORT BAR	
POUR	QUANTITY
P-2	355 - #5 X 3'-11"

PLEASE NOTE 10% WASTAGE IS ADDED INTO TOTAL QUANTITY.

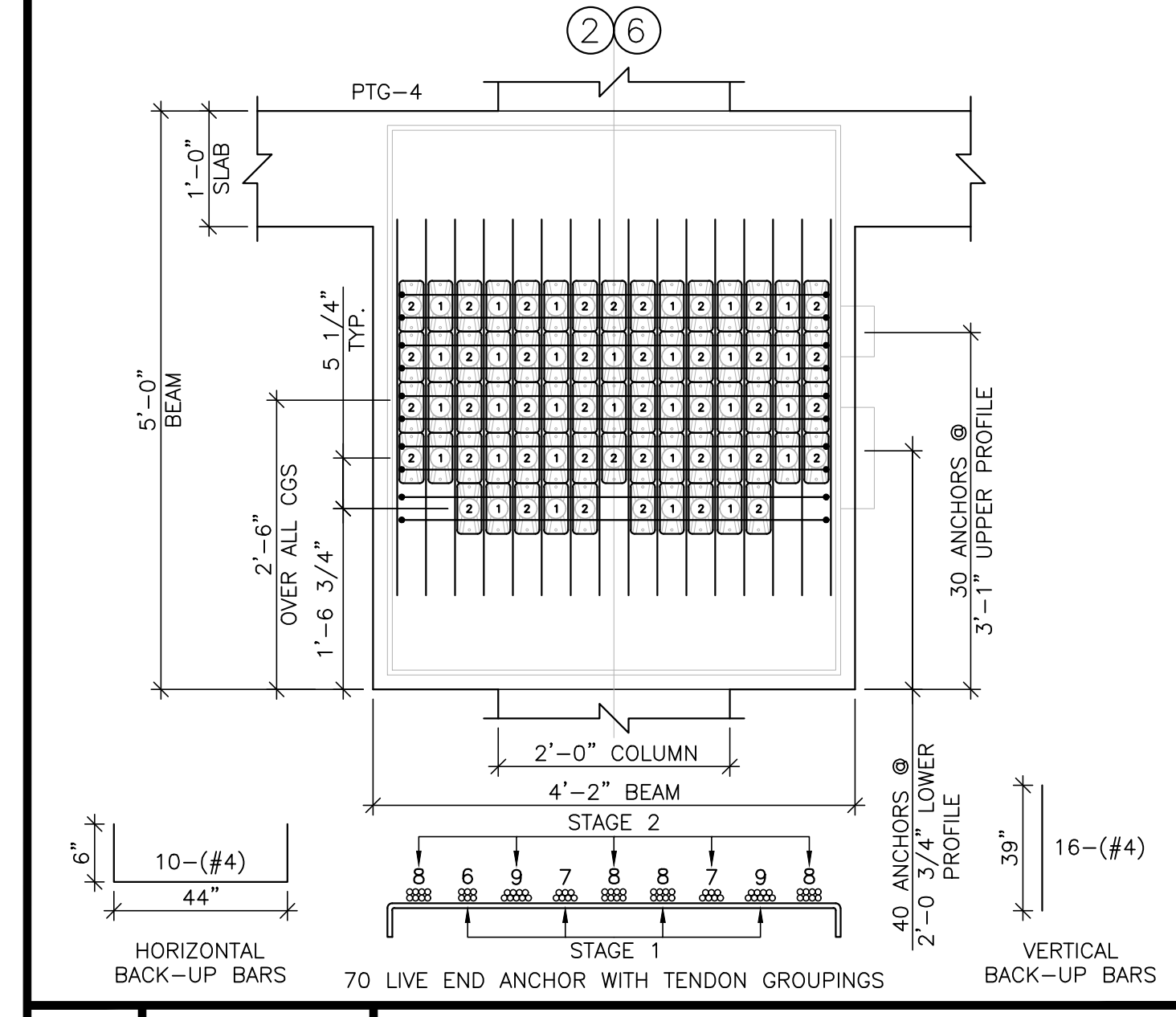


STAGE STRESSING FOR PT GIRDER 5 @ GRID 3, 4 & 5	
STAGE 1 (26T)	STRESS 702 KIPS INITIALLY.
STAGE 2 (26T)	STRESS 702 KIPS AFTER CONSTRUCTION OF LEVEL 6 SLAB.
STAGE 3 (26T)	STRESS 702 KIPS AFTER CONSTRUCTION OF LEVEL 10 SLAB.

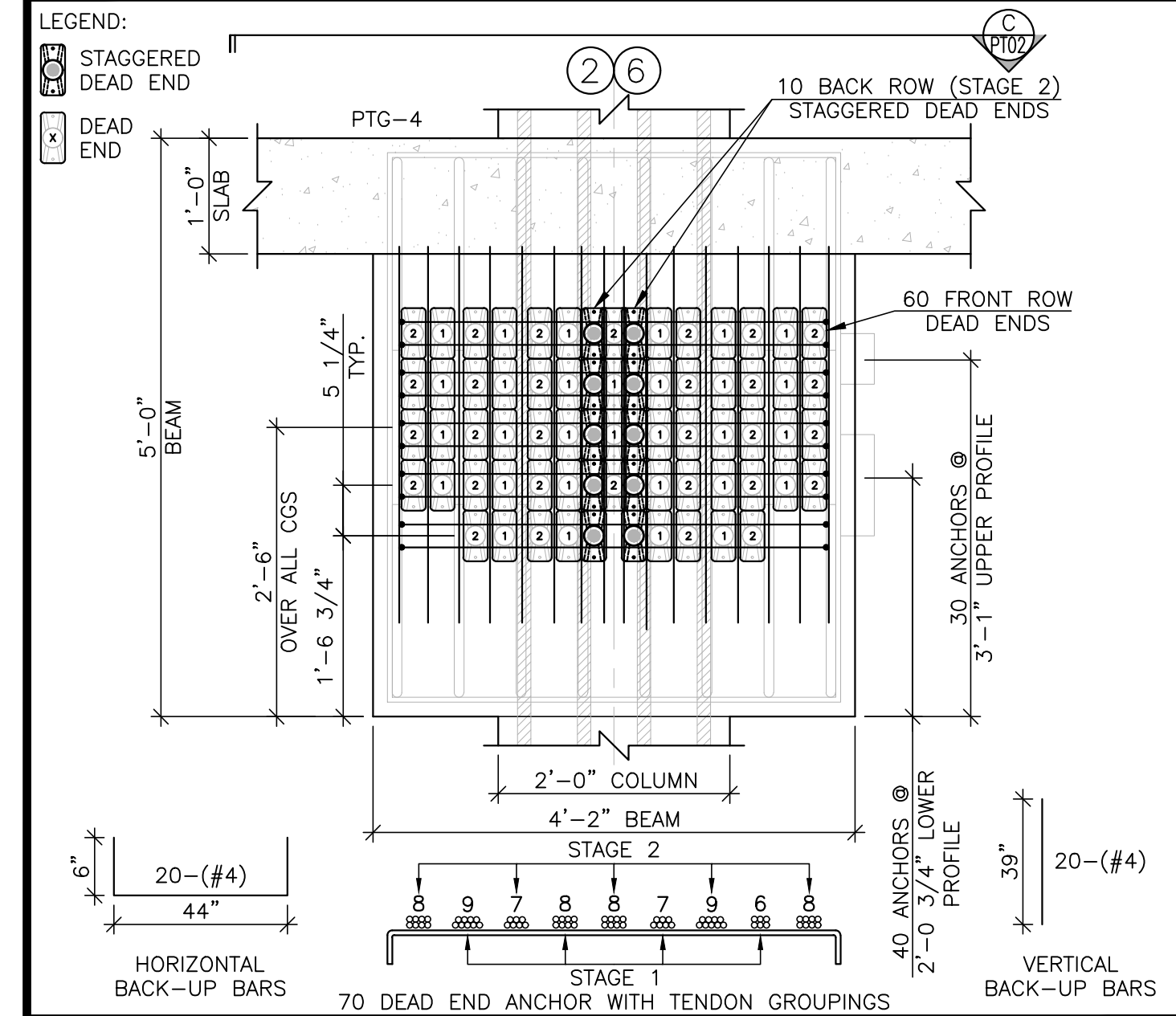
2 BEAM PROFILE FOR PTG-5 (50"X60") AT GRID 3, 4 & 5 (FORCE = 2106 KIPS) LEVEL 2

- PLEASE NOTE :-**
- REFER SHEET "GENERAL NOTES & DETAILS" ABOUT ALL STANDARDS & INFORMATION.
 - SPACES NOT DIMENSIONED, USE THE NUMBER OF SPACES SHOWN, SPACED EQUALLY, WITH SPACES NOT TO EXCEED 4'-0".
 - ALL TENDON SUPPORT HEIGHTS ARE MEASURED FROM THE BOTTOM OF THE BEAM SOFFIT TO THE TOP OF A #4 SUPPORT BAR TIED TO THE BEAM STIRRUPS.
 - HOLD SUPPORT BAR 6" OFF SLAB EDGE AT STRESS & DEAD END OR 3" OFF AT BEAM FACE (U.N.O.).
 - ** DENOTES SMOOTH TRANSITION.

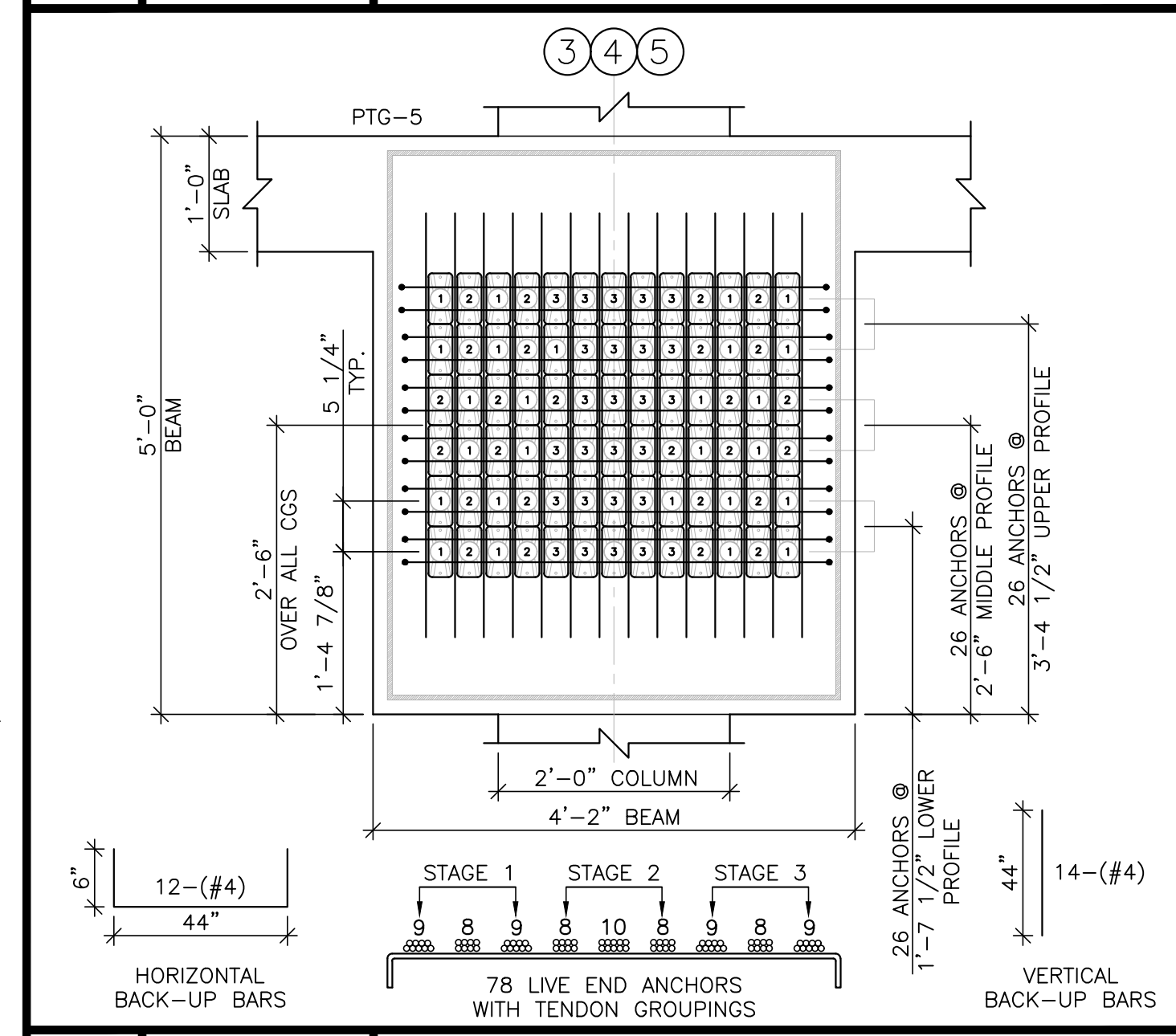
NOT FOR CONSTRUCTION



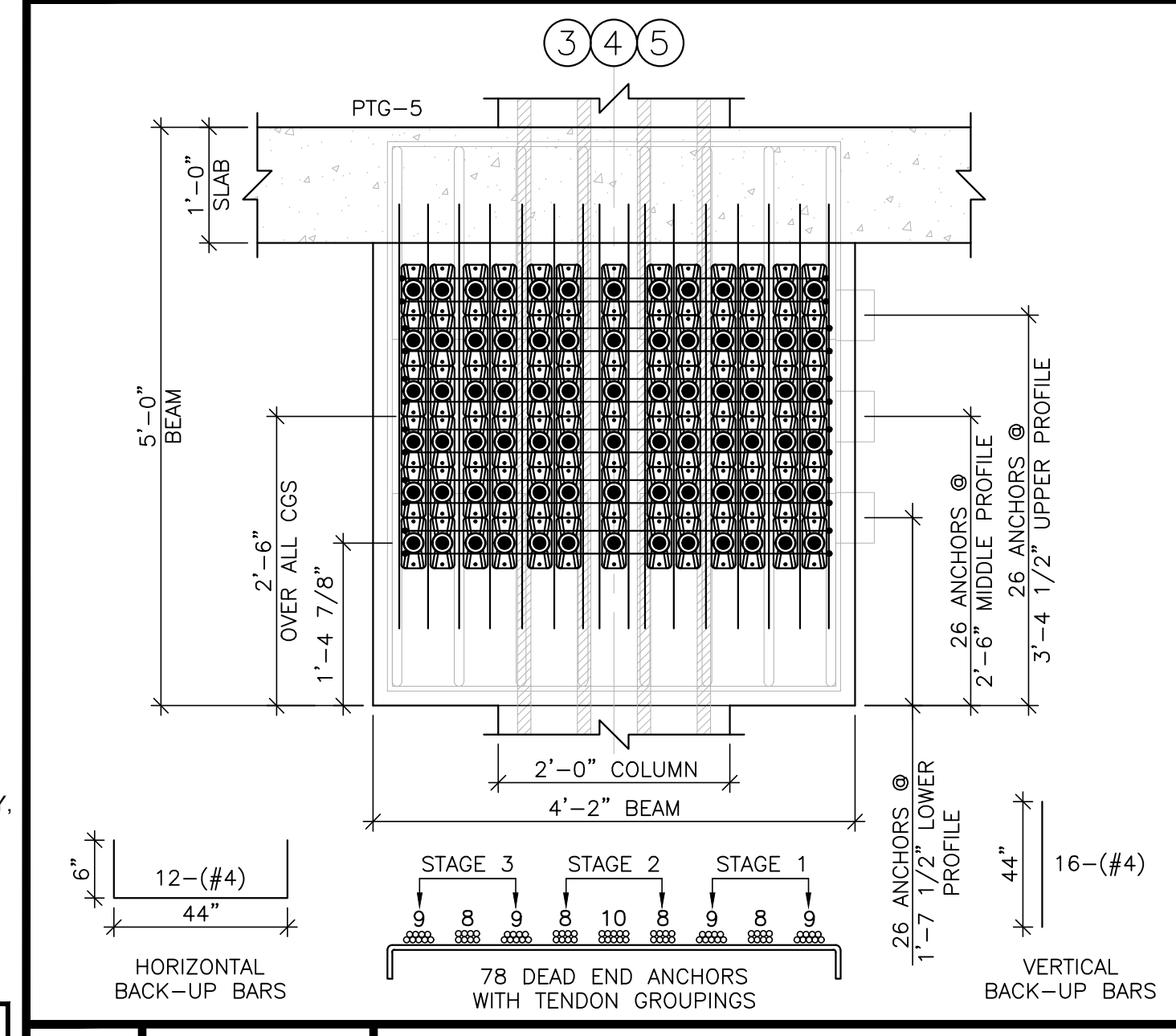
1A 3/4"=1'-0" END VIEW DETAIL (PTG-4)



1B 3/4"=1'-0" END VIEW DETAIL (PTG-4)



2A 3/4"=1'-0" END VIEW DETAIL (PTG-5)



2B 3/4"=1'-0" END VIEW DETAIL (PTG-5)