

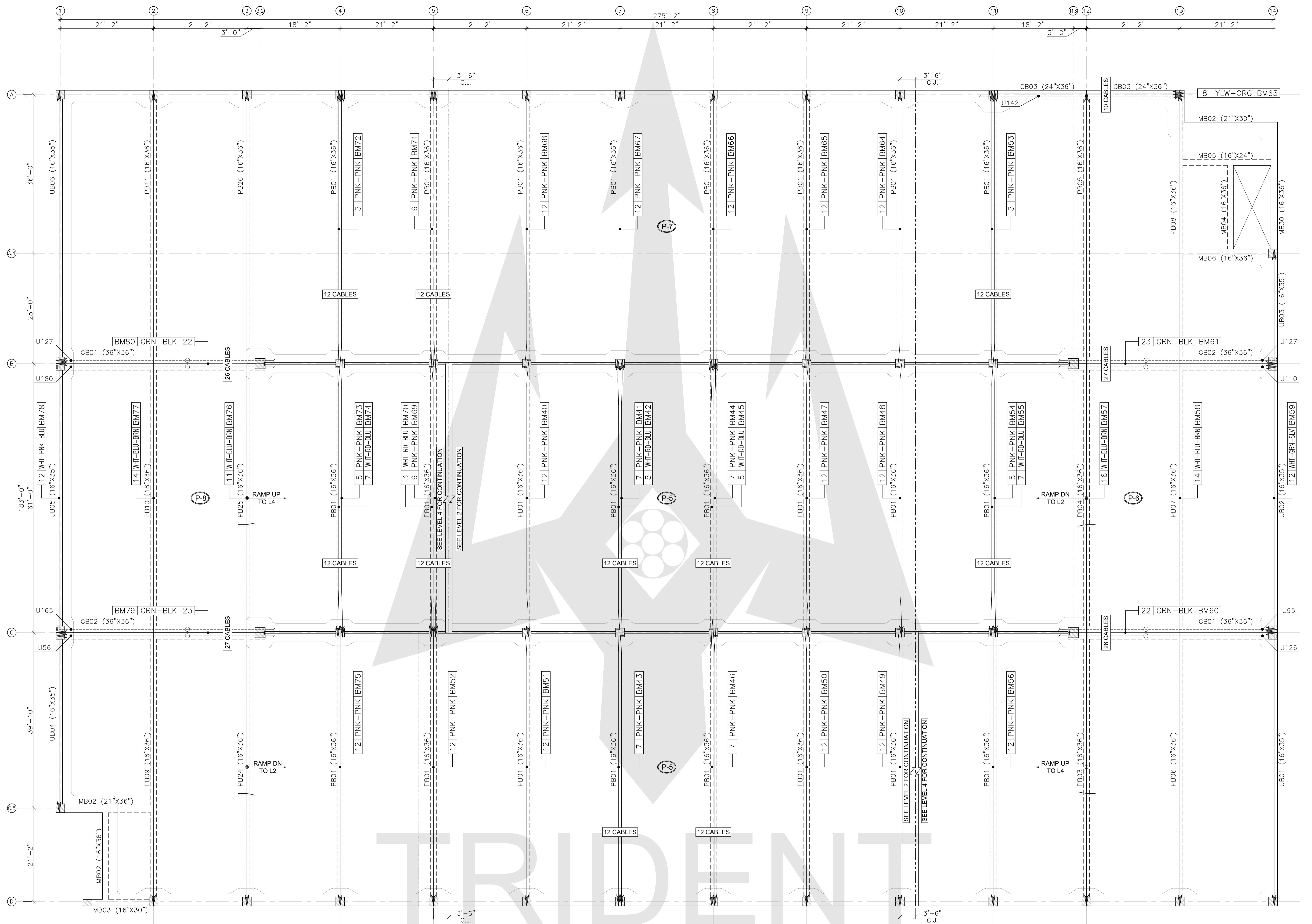
UNIFORM TENDON LAYOUT
LEVEL 3

5 1/2" THICK SLAB U.N.O.

PLEASE NOTE:
PLEASE REFER PT05 FOR PT LEGEND,
COLOUR CODE, CONFIGURATION LEGEND,
TENDONS SCHEDULE & TYPICAL DETAILS.

- PLEASE NOTE :-**
- FOR ALL STRANDS SECTIONS & DETAILS, REFER SHEET "GENERAL NOTES & DETAILS".
 - BANDED TENDON GROUPS TO BE PLACED AT 12" O.C.(U.N.O).
 - UNIFORM TENDON GROUPS SHOULD BE EQUALLY SPACED AND MUST NOT BE EXCEED 4'-0" (±).
 - HOLD TENDON GROUPING 12" OFF PARALLEL TO SLAB EDGE WHILE MAINTAINING 12" DISTANCE BETWEEN SLAB EDGE & FIRST ANCHOR.

NOT FOR CONSTRUCTION



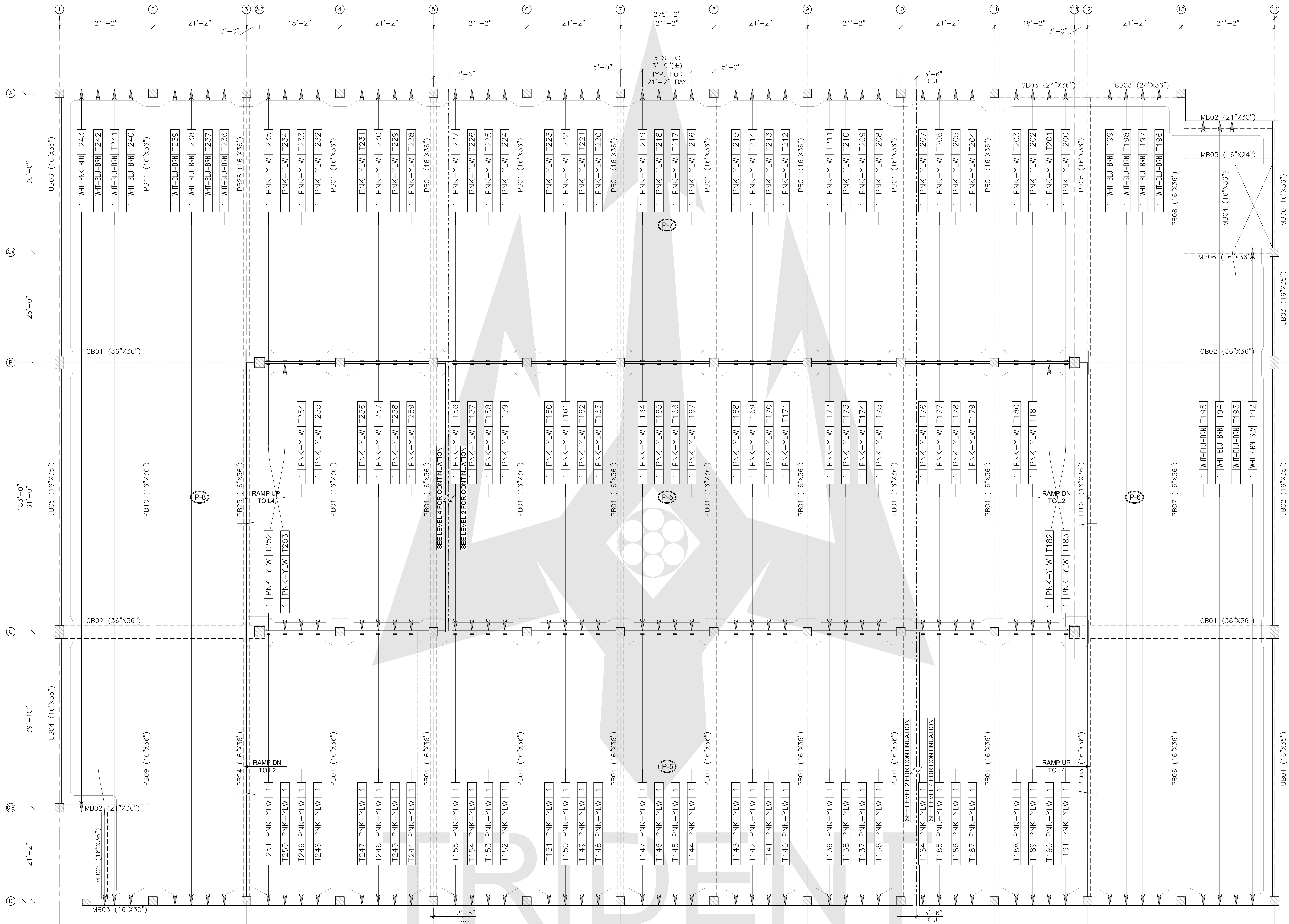
BEAM TENDON LAYOUT
LEVEL 3

5 1/2" THICK SLAB U.N.O.

PLEASE NOTE:
PLEASE REFER PT05 FOR PT LEGEND,
COLOUR CODE, CONFIGURATION LEGEND,
TENDONS SCHEDULE & TYPICAL DETAILS.

- PLEASE NOTE :-**
- FOR ALL STRANDS SECTIONS & DETAILS, REFER SHEET "GENERAL NOTES & DETAILS".
 - BANDED TENDON GROUPS TO BE PLACED AT 12" O.C.(U.N.O).
 - UNIFORM TENDON GROUPS SHOULD BE EQUALLY SPACED AND MUST NOT BE EXCEED 4'-0" (±).
 - HOLD TENDON GROUPING 12" OFF PARALLEL TO SLAB EDGE WHILE MAINTAINING 12" DISTANCE BETWEEN SLAB EDGE & FIRST ANCHOR.

NOT FOR CONSTRUCTION



TEMPERATURE TENDON LAYOUT
LEVEL 3

5 1/2" THICK SLAB U.N.O.

PLEASE NOTE:
PLEASE REFER PT05 FOR PT LEGEND,
COLOUR CODE FOR TENDON GROUPING,
TENDONS SCHEDULE & TYPICAL DETAILS.

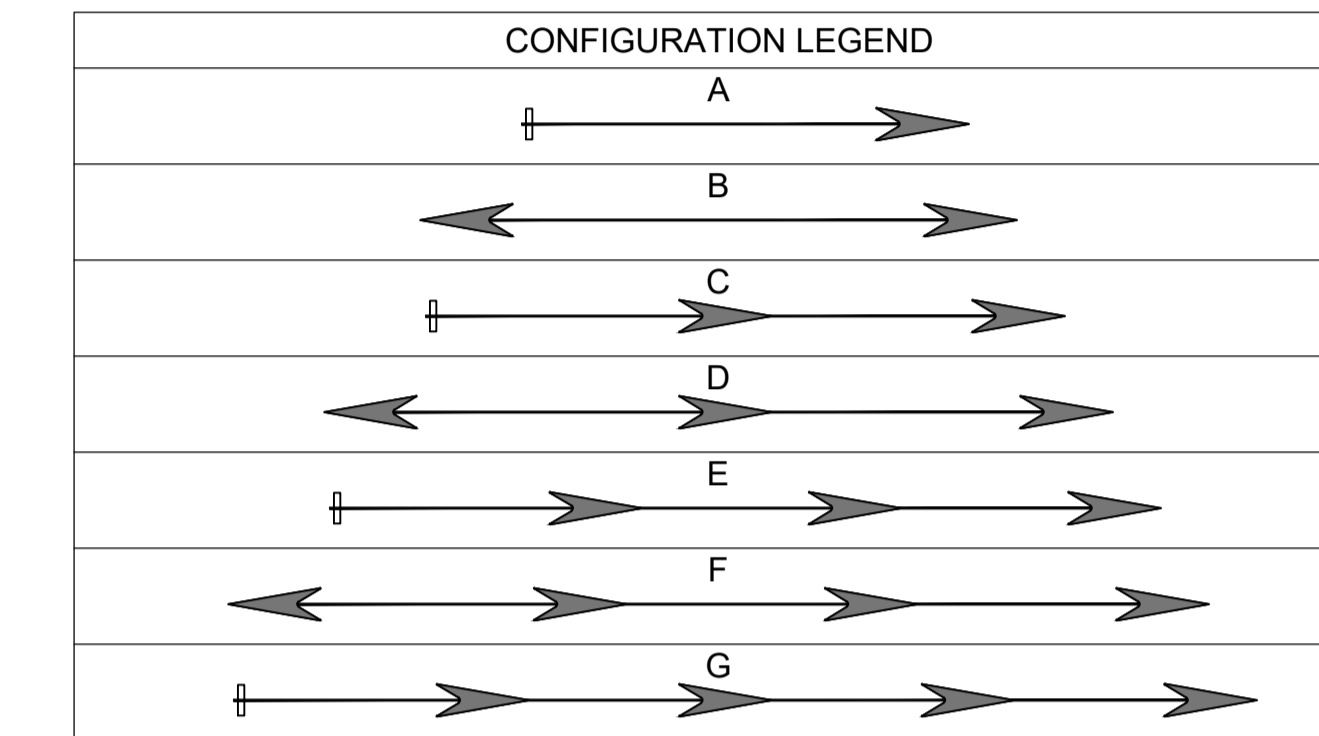
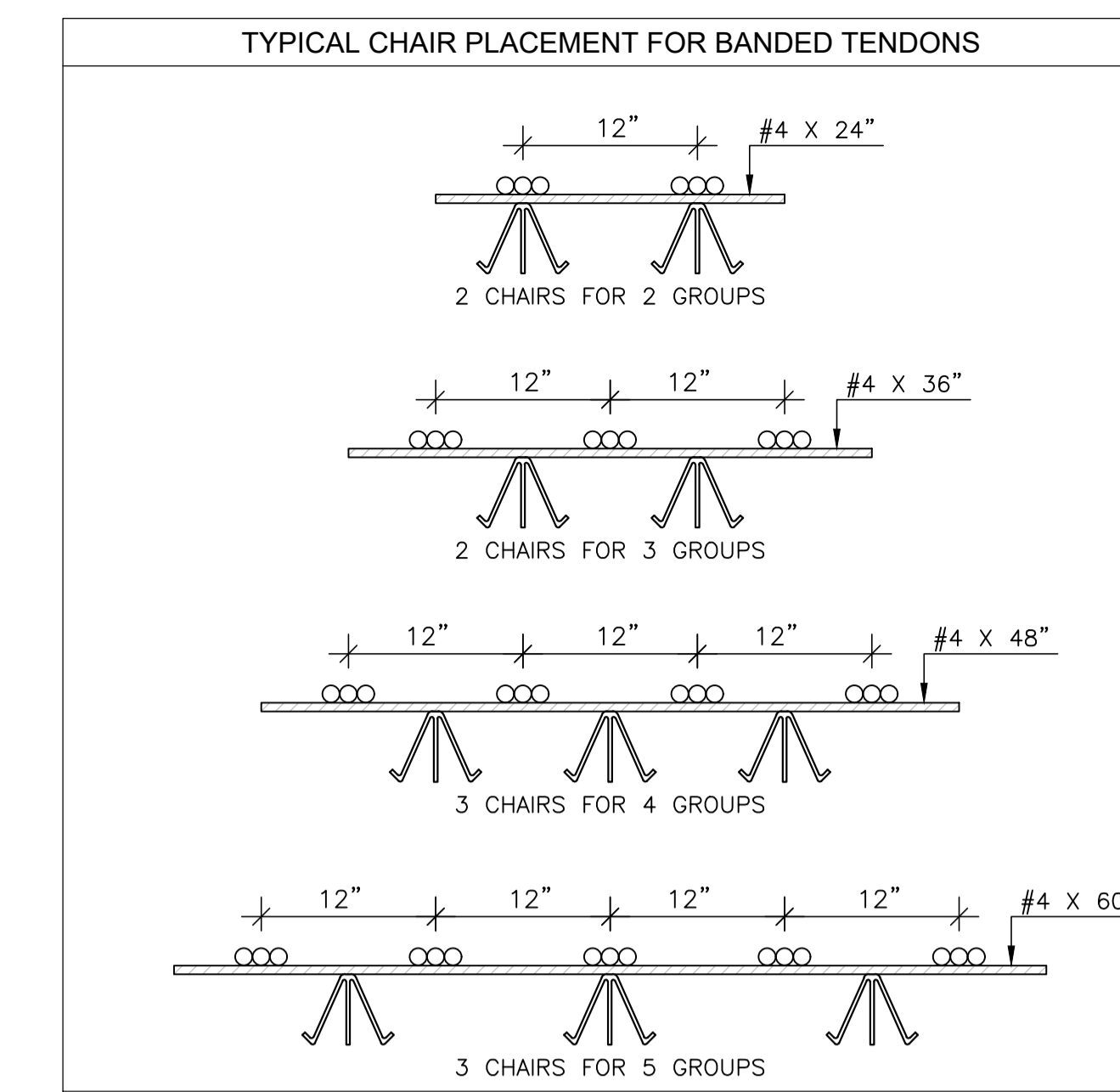
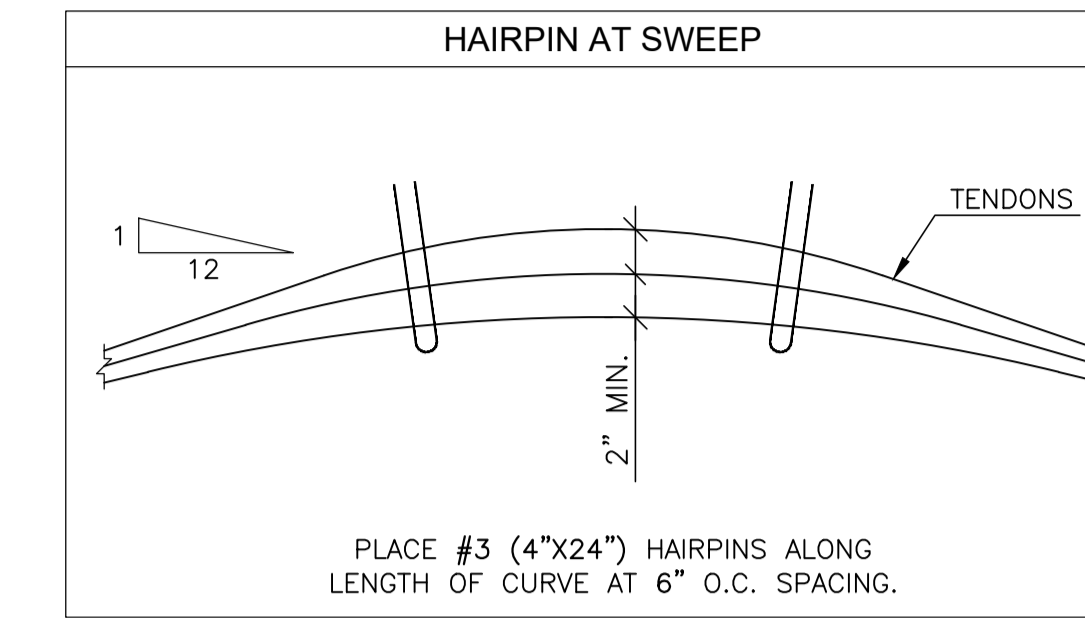
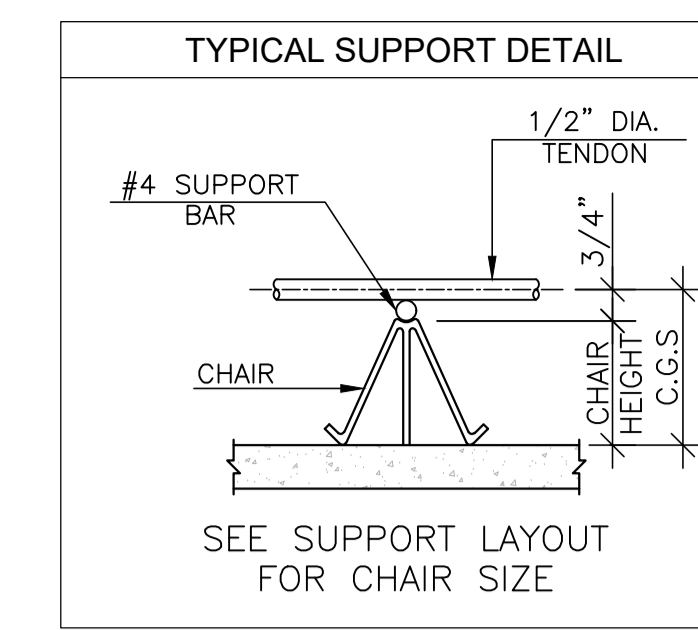
- PLEASE NOTE :-**
- FOR ALL STRANDS SECTIONS & DETAILS, REFER SHEET "GENERAL NOTES & DETAILS".
 - BANDED TENDON GROUPS TO BE PLACED AT 12" O.C.(U.N.O).
 - UNIFORM TENDON GROUPS SHOULD BE EQUALLY SPACED AND MUST NOT BE EXCEED 4'-0" (±).
 - HOLD TENDON GROUPING 12" OFF PARALLEL TO SLAB EDGE WHILE MAINTAINING 12" DISTANCE BETWEEN SLAB EDGE & FIRST ANCHOR.

NOT FOR CONSTRUCTION

TEMPERATURE TENDON SCHEDULE					
TENDON COUNT	POUR	COLOUR CODE	CONFIGURATION	QTY. & CUT LENGTH	ELONGATION
PLEASE REFER LEVEL 2 SCHEDULE FOR TENDON COUNT BELOW T136.					
T136-T175	5	PNK-YLW	I-->	40 x 64'-0"	5"
T176-T191	6	PNK-YLW	I-->	16 x 64'-0"	5"
T192	6	WHT-GRN-SLV	<-->	1 x 153'-0"	12 1/4"
T193-T199	6	WHT-BLU-BRN	<-->	7 x 189'-0"	15"
T200-T207	6	PNK-YLW	I-->	8 x 64'-0"	5"
T208-T227	7	PNK-YLW	I-->	20 x 64'-0"	5"
T228-T235	8	PNK-YLW	I-->	8 x 64'-0"	5"
T236-T242	8	WHT-BLU-BRN	<-->	7 x 189'-0"	15"
T243	8	WHT-PNK-BLU	<-->	1 x 168'-0"	13 3/8"
T244-T259	8	PNK-YLW	I-->	16 x 64'-0"	5"

UNIFORM TENDON SCHEDULE										
TENDON COUNT	POUR	COLOUR CODE	CONFIGURATION	QTY. & CUT LENGTH	LENGTH			ELONGATION		
					L1	L2	L3	E1	E2	E3
PLEASE REFER LEVEL 2 SCHEDULE FOR TENDON COUNT BELOW U111.										
U111	6	RED-ORG-SLV	I-->-->	2 x 273'-0"	82'-2"	112'-10"	76'-0"	6 1/2"	9 1/4"	6 1/8"
U112-U115	6	RED-PNK-BRN	I-->-->	8 x 269'-0"	82'-2"	112'-10"	71'-7"	6 1/2"	9 1/4"	5 3/4"
U116-U126	6	RED-ORG-BRN	I-->-->	22 x 279'-0"	82'-2"	112'-10"	82'-2"	6 1/2"	9 1/4"	6 1/2"
U127-U133	6	RED-ORG-BRN	I-->-->	14 x 279'-0"	82'-2"	105'-10"	89'-2"	6 1/2"	8 1/2"	7 1/4"
U134-U137	6	RED-ORG-BRN	I-->-->	8 x 279'-0"	72'-1 3/4"	105'-10"	89'-2"	6"	8 1/2"	7 1/4"
U138-U140	6	RED-ORG-BRN	I-->-->	6 x 279'-0"	82'-2"	105'-10"	89'-2"	6 1/2"	8 1/2"	7 1/4"
U141-U142	6	RED-GRN-BLU	I-->-->	4 x 258'-0"	61'-0"	105'-10"	89'-2"	4 7/8"	8 1/2"	7 1/4"
U143-U152	6	RED-BRN	I-->	12 x 29'-0"	26'-7"	-	-	2"	-	-
U155-U164	8	RED-BRN	I-->	12 x 29'-0"	26'-7"	-	-	2"	-	-
U165-U180	8	RED-ORG-BRN	I-->-->	32 x 279'-0"	89'-2"	105'-10"	82'-2"	7 1/4"	8 1/2"	6 1/2"

BEAM TENDON SCHEDULE					
TENDON COUNT	POUR	COLOUR CODE	CONFIGURATION	QTY. & CUT LENGTH	ELONGATION
PLEASE REFER LEVEL 2 SCHEDULE FOR TENDON COUNT BELOW BM40.					
BM40-BM41	5	PNK-PNK	I-->	19 x 66'-0"	5"
BM42	5	WHT-RD-BLU	<-->	5 x 128'-0"	10 1/8"
BM43-BM44	5	PNK-PNK	I-->	14 x 66'-0"	5"
BM45	5	WHT-RD-BLU	<-->	5 x 128'-0"	10 1/8"
BM46-BM52	5	PNK-PNK	I-->	79 x 66'-0"	5"
BM53-BM54	6	PNK-PNK	I-->	10 x 66'-0"	5"
BM55	6	WHT-RD-BLU	<-->	7 x 128'-0"	10 1/8"
BM56	6	PNK-PNK	I-->	14 x 66'-0"	5"
BM57-BM58	6	WHT-BLU-BRN	<-->	30 x 189'-0"	15 1/8"
BM59	6	WHT-GRN-SLV	<-->	12 x 153'-0"	12 1/8"
BM60-BM61	6	GRN-BLK	I-->	45 x 50'-0"	3 7/8"
PLEASE NOTE BEAM TENDON COUNT BM62 IS NOT IN USE.					
BM63	6	YLW-ORG	I-->	8 x 47'-0"	3 1/2"
BM64-BM68	7	PNK-PNK	I-->	60 x 66'-0"	5"
BM69	8	PNK-PNK	I-->	9 x 66'-0"	5"
BM70	8	WHT-RD-BLU	<-->	3 x 128'-0"	10 1/8"
BM71-BM73	8	PNK-PNK	I-->	19 x 66'-0"	5"
BM74	8	WHT-RD-BLU	<-->	7 x 128'-0"	10 1/8"
BM75	8	PNK-PNK	I-->	12 x 66'-0"	5"
BM76-BM77	8	WHT-BLU-BRN	<-->	25 x 189'-0"	15 1/8"
BM78	8	WHT-PNK-BLU	<-->	12 x 168'-0"	13 1/2"
BM79-BM80	8	GRN-BLK	I-->	45 x 50'-0"	3 7/8"



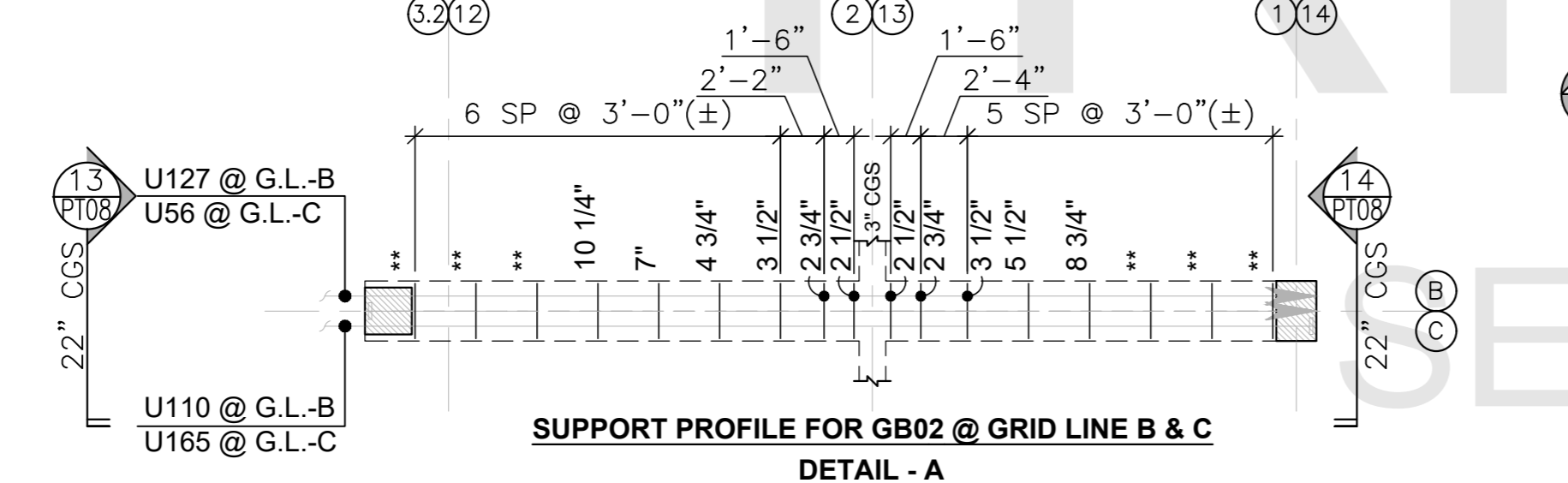
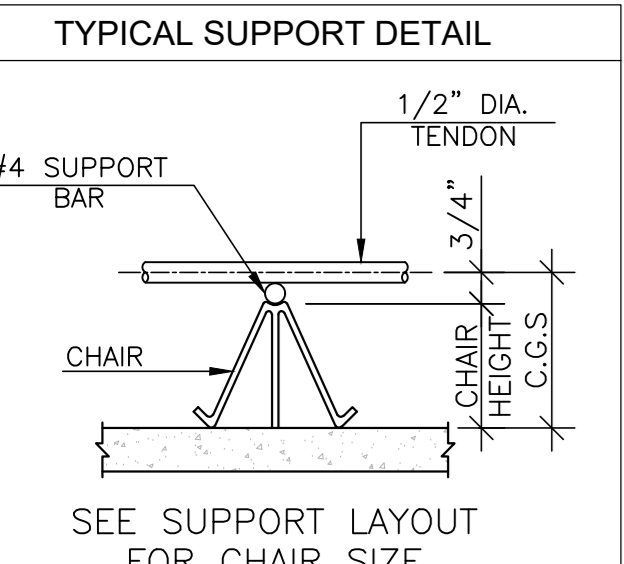
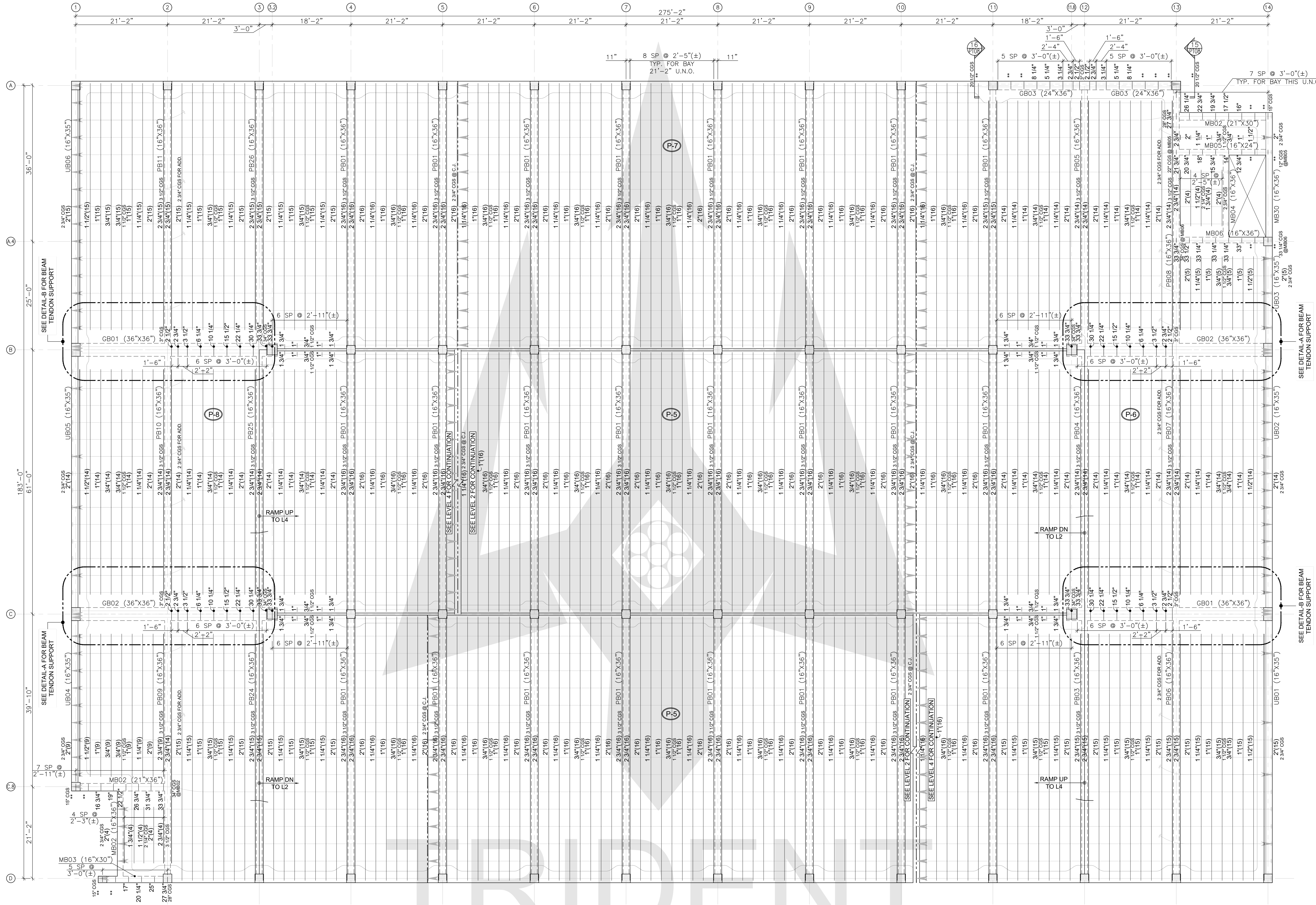
COLOUR CODE		
DIGIT	SYMBOL	COLOUR
0	BLK	BLACK
1	WHT	WHITE
2	RD	RED
3	SLV	SILVER
4	YLW	YELLOW
5	GRN	GREEN
6	PNK	PINK
7	ORG	ORANGE
8	BLU	BLUE
9	BRN	BROWN

PT LEGENDS	
SYMBOL	DESCRIPTION
→	STRESS END
⊥	DEAD END
G COLOUR B501	BAND TENDON COUNT
G COLOUR U501	UNIFORM TENDON COUNT
G COLOUR BM501	BEAM TENDON COUNT
G COLOUR T501	TEMPERATURE TENDON COUNT
(C.J.)	CONSTRUCTION JOINT / E.J.
(P.1)	POUR SEQUENCE
—○—	ONE STRAND
—○—○—	TWO STRANDS
—○—○—○—	THREE STRANDS
—○—○—○—○—	FOUR STRANDS
—○—○—○—○—○—	FIVE STRANDS

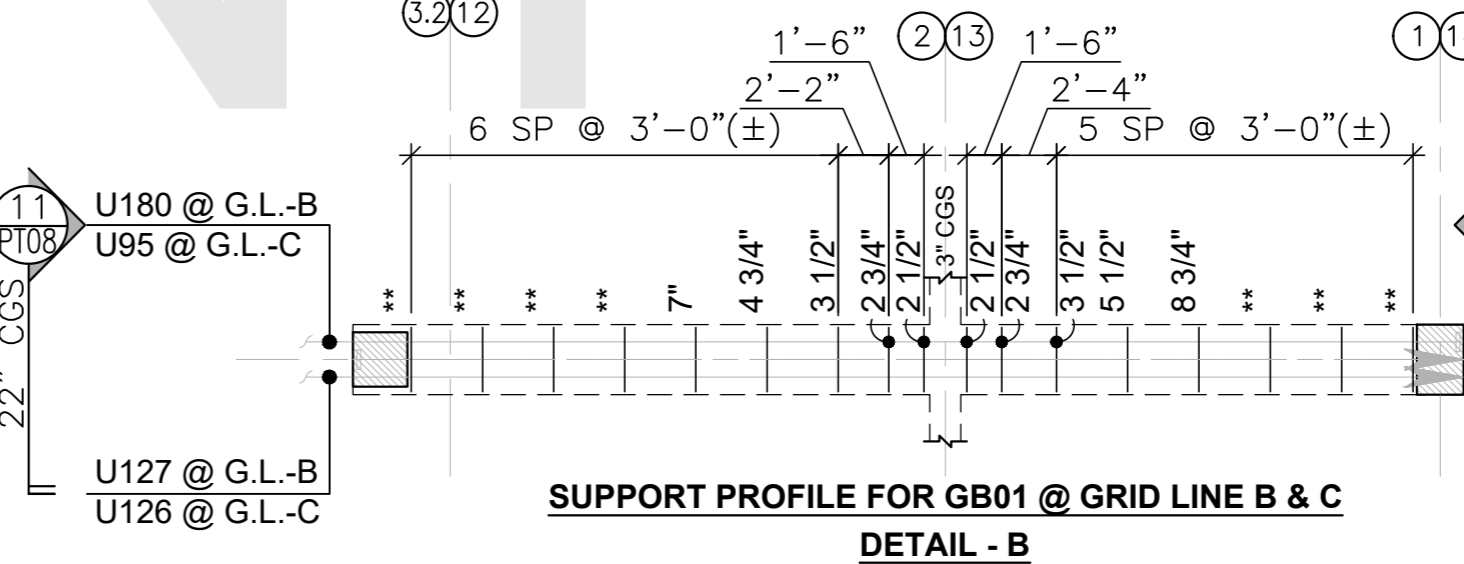
TRIDENT

SERVICES

NOT FOR CONSTRUCTION

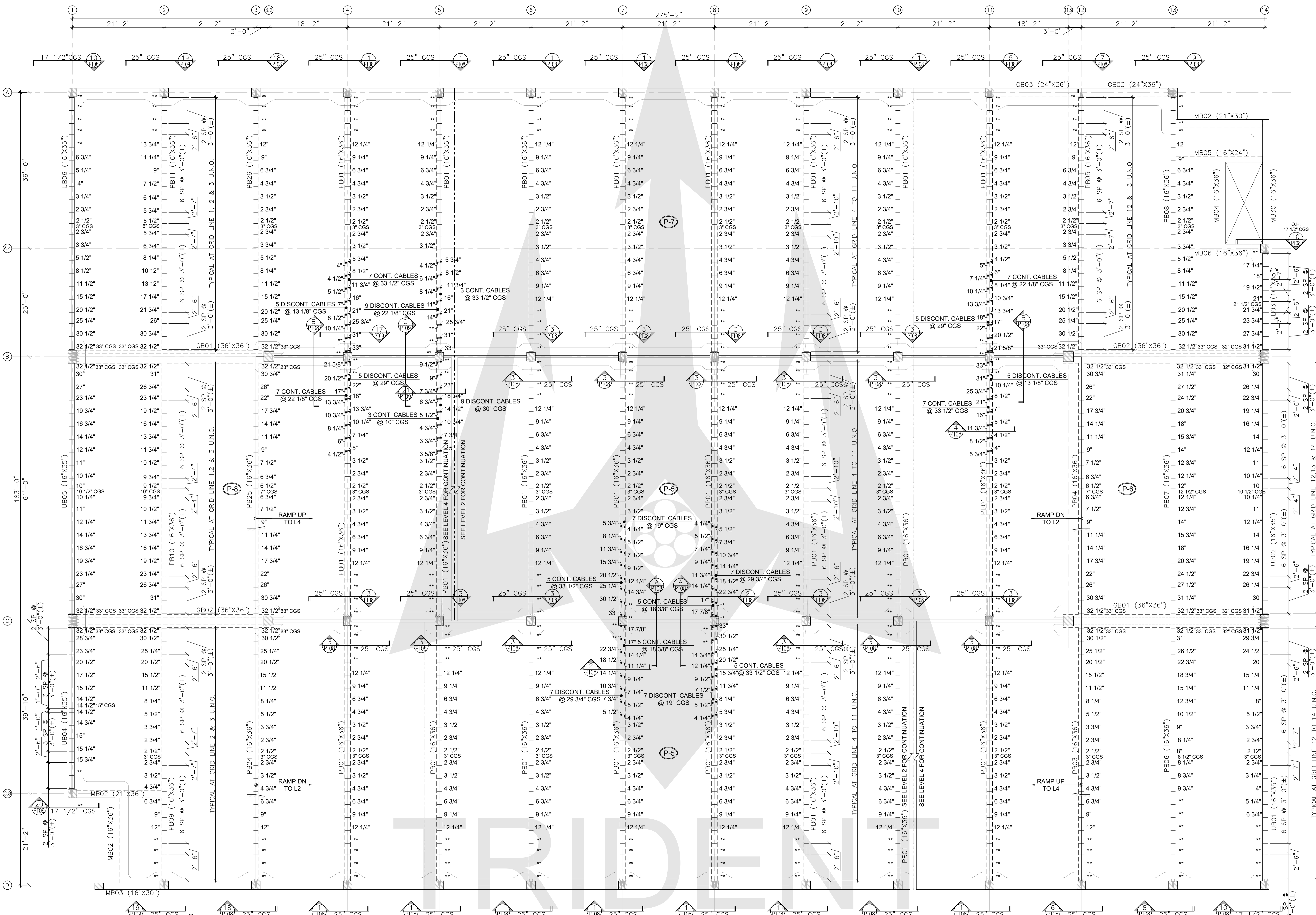


UNIFORM SUPPORT LAYOUT
LEVEL 3
5 1/2\"/>



- PLEASE NOTE:-** (FOR BAND, UNIFORM & TEMPERATURE SUPPORT)
- REFER SHEET "GENERAL NOTES & DETAILS" ABOUT ALL STANDARDS & INFORMATION.
 - PLACE # 4 SUPPORT BAR ON THE TOP OF CHAIRS (TYP. U.N.O.).
 - SPACES NOT DIMENSIONED, USE THE NUMBER OF SPACES SHOWN, SPACED EQUALLY. WITH SPACES NOT TO EXCEED 4'-0".
 - 8 1/2" INDICATES CHAIR HEIGHT & (2) INDICATED QUANTITY OF CHAIRS ALONG EACH.
 - ALL TENDON CHAIR HEIGHTS ARE MEASURED FROM THE BOTTOM OF THE SLAB TO THE BOTTOM OF SUPPORT BAR. IF CHAIR QUANTITY NOT PROVIDED USE MINIMUM 2 CHAIRS.
 - HOLD SUPPORT BAR 6" OFF SLAB EDGE AT STRESS & DEAD END OR 3" OFF AT BEAM FACE (U.N.O.).

NOT FOR CONSTRUCTION

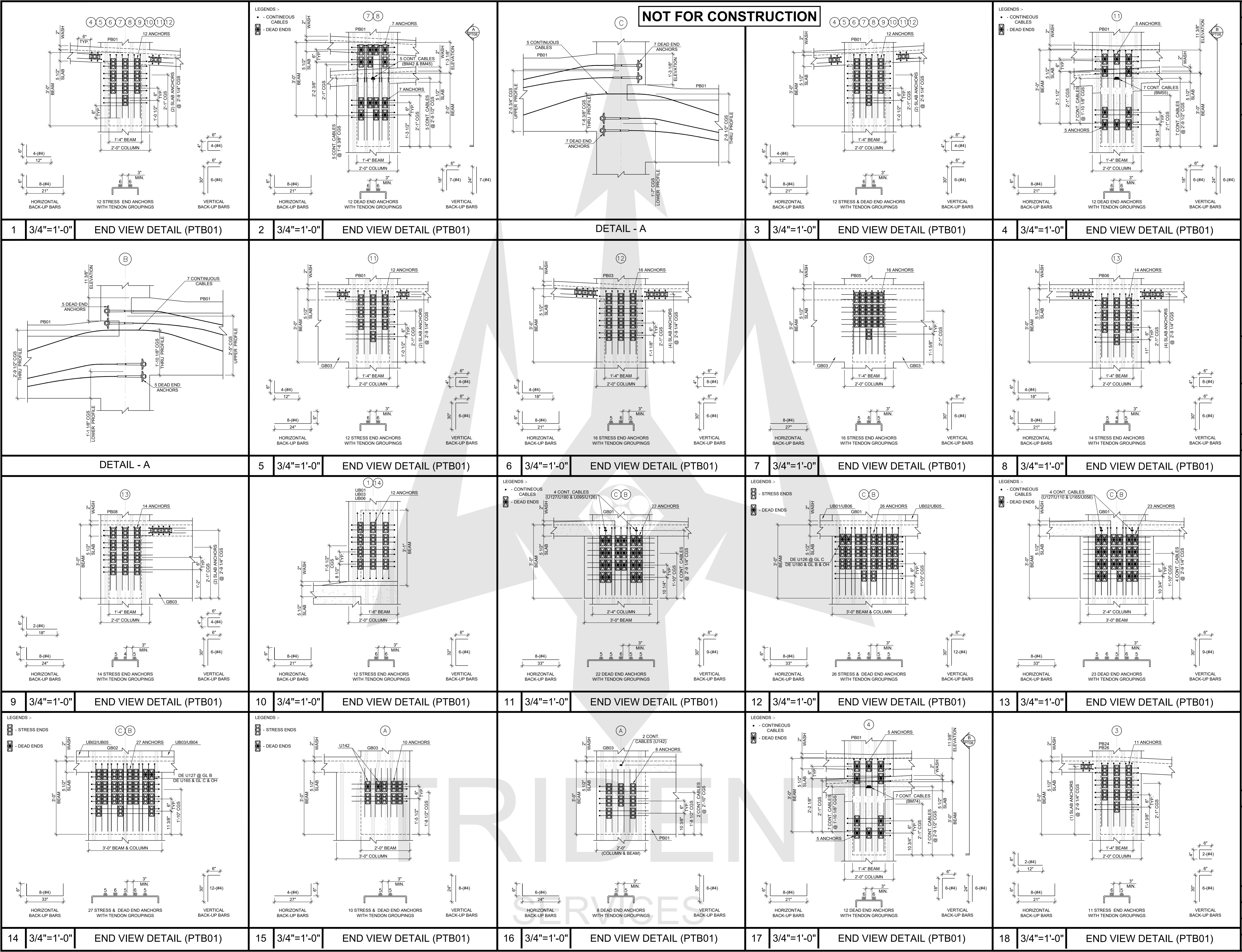


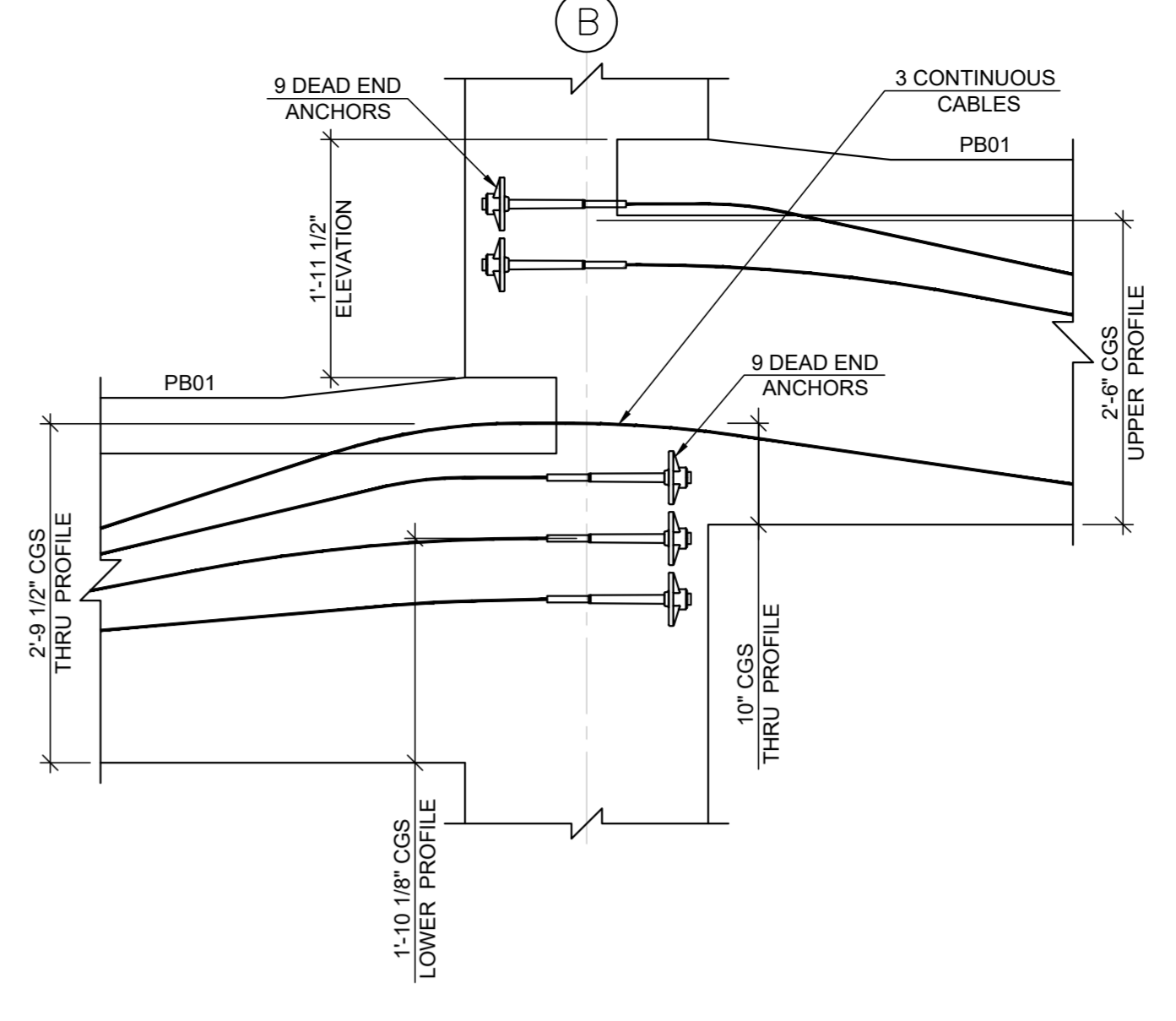
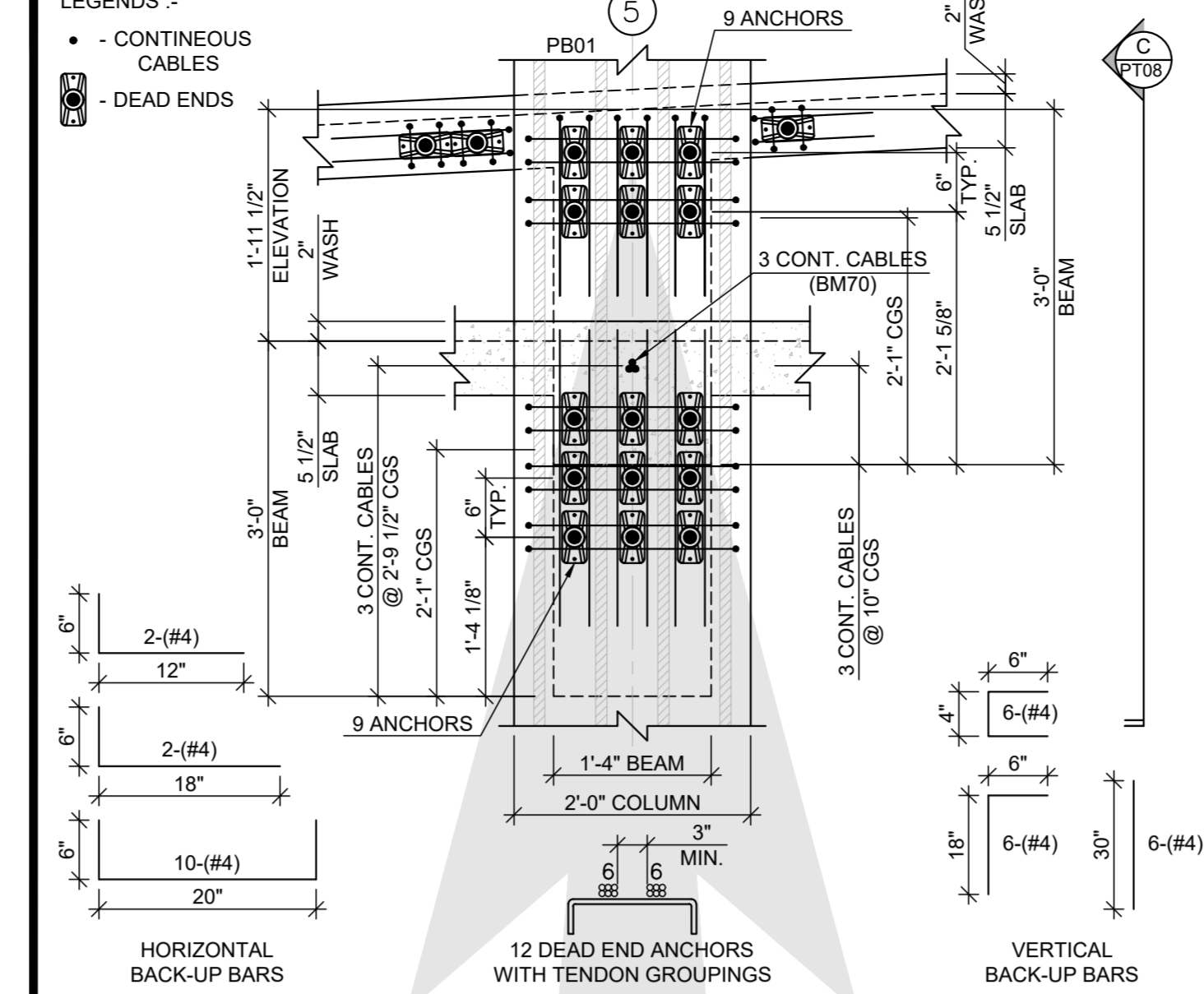
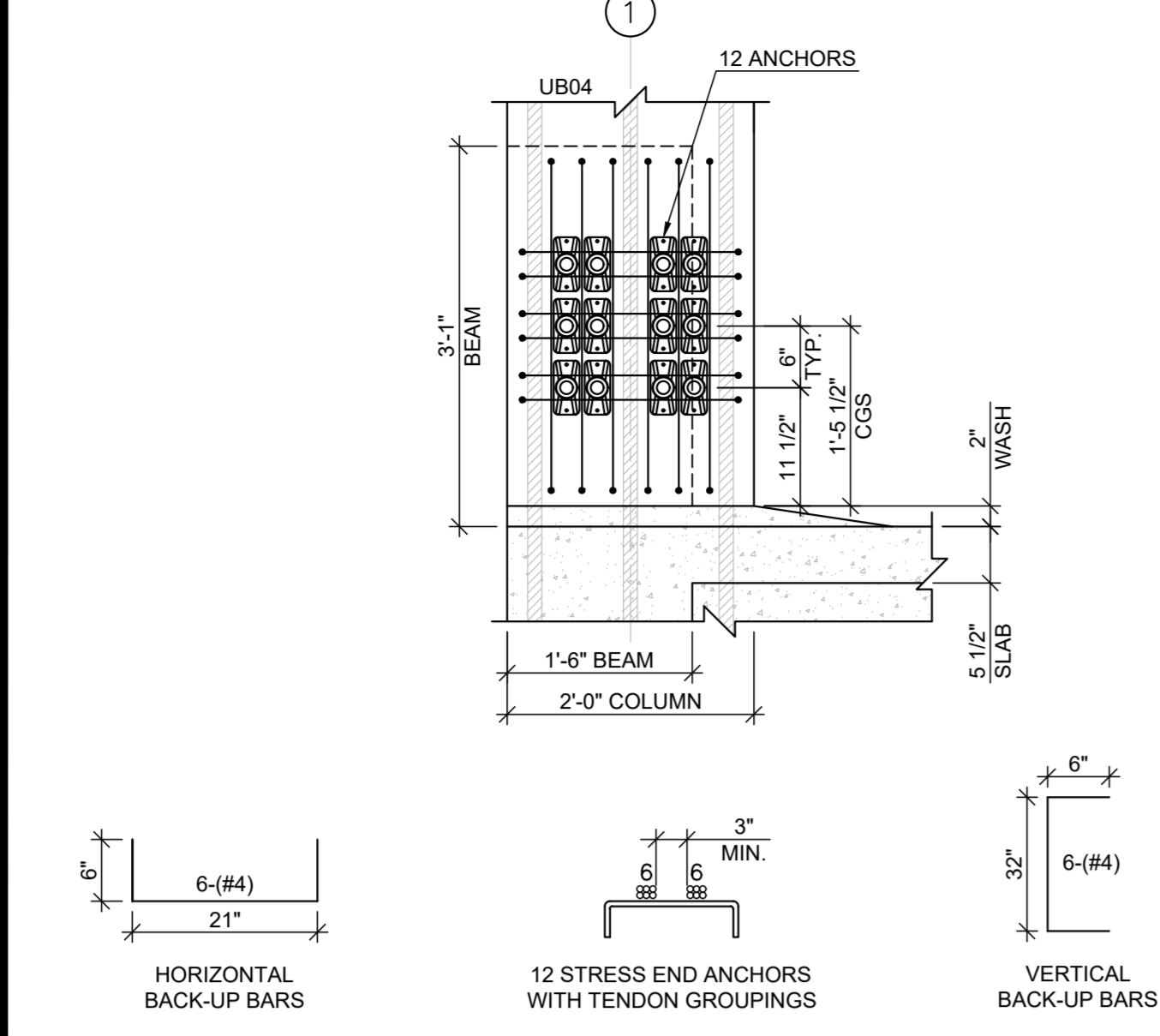
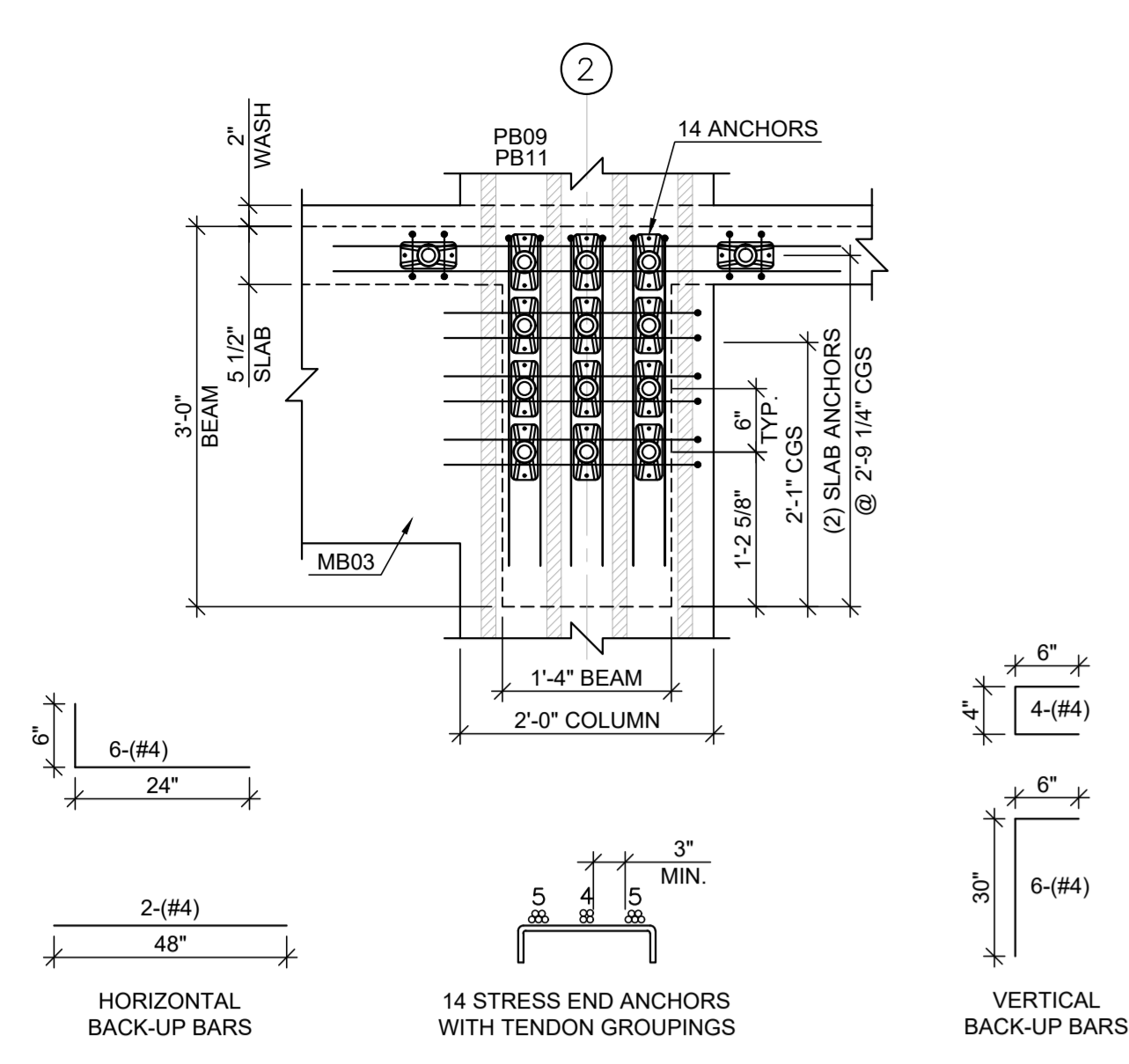
BEAM SUPPORT LAYOUT
LEVEL 3

5 1/2" THICK SLAB U.N.O.

- PLEASE NOTE:**
1. REFER SHEET "GENERAL NOTES & DETAILS" ABOUT ALL STANDARDS & INFORMATION.
 2. SPACES NOT DIMENSIONED, USE THE NUMBER OF SPACES SHOWN, SPACED EQUALLY, WITH SPACES NOT TO EXCEED 4'-0".
 3. ALL TENSION SUPPORT HEIGHTS ARE MEASURED FROM THE BOTTOM OF THE BEAM SOFFIT TO THE TOP OF A # 4 SUPPORT BAR TIED TO THE BEAM STIRRUPS.
 4. HOLD SUPPORT BAR 6" OFF SLAB EDGE AT STRESS & DEAD END OR 3" OFF AT BEAM FACE (U.N.O.).
 5. ** DENOTES SMOOTH TRANSITION.

NOT FOR CONSTRUCTION





19 3/4"=1'-0" END VIEW DETAIL (PTB01)

20 3/4"=1'-0" END VIEW DETAIL (PTB01)

21 3/4"=1'-0" END VIEW DETAIL (PTB01)

DETAIL - C



TRIDENT
SERVICES