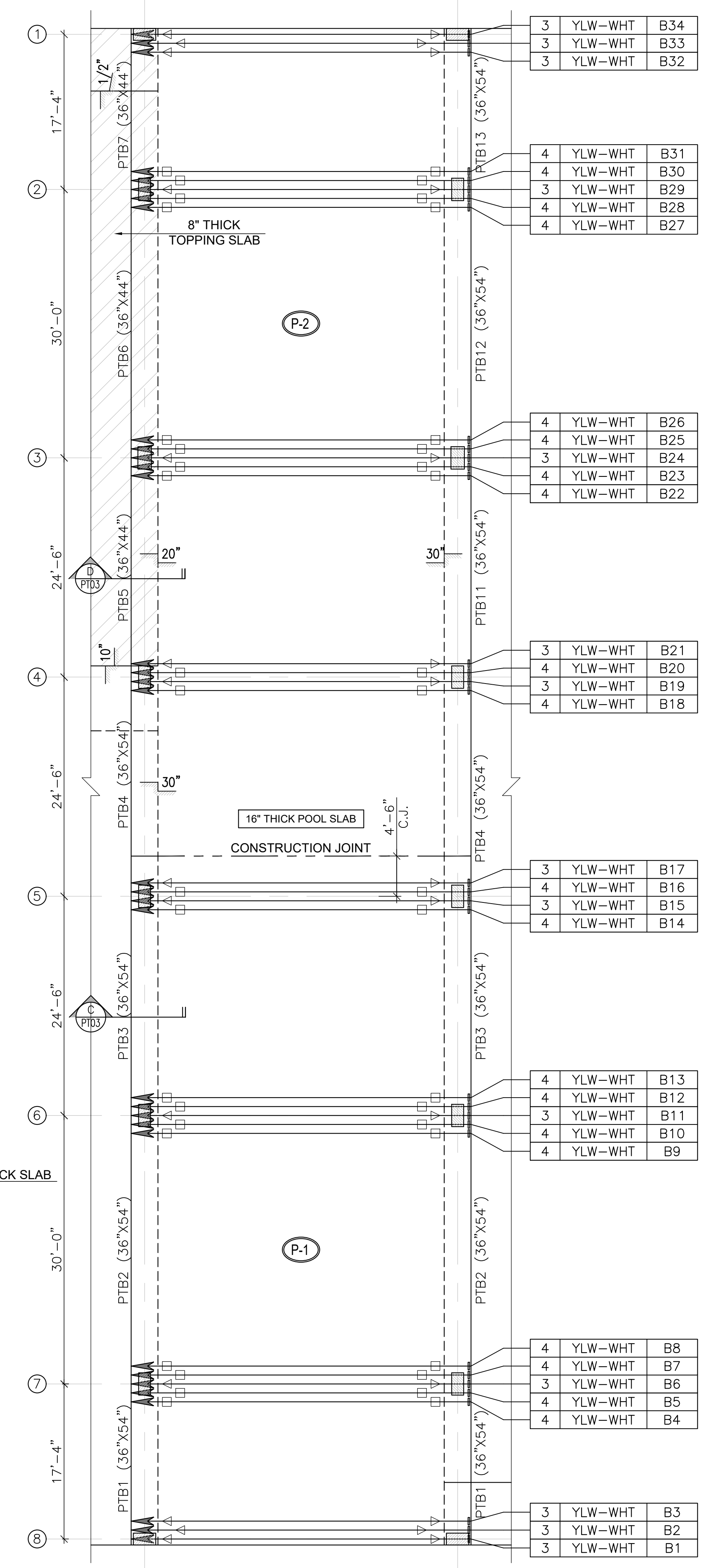
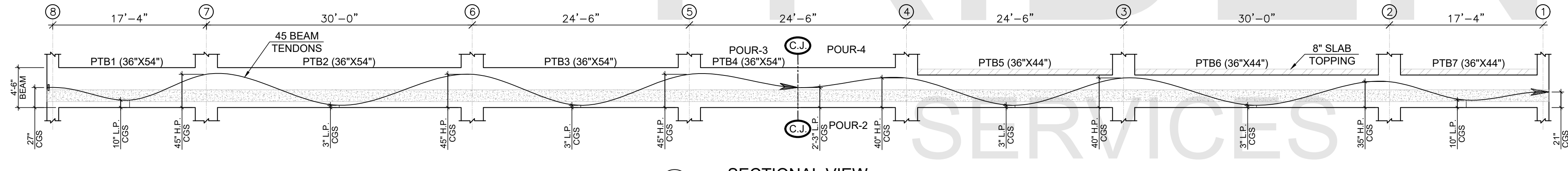


**BANDED & BEAM TENDON LAYOUT
LEVEL 2**

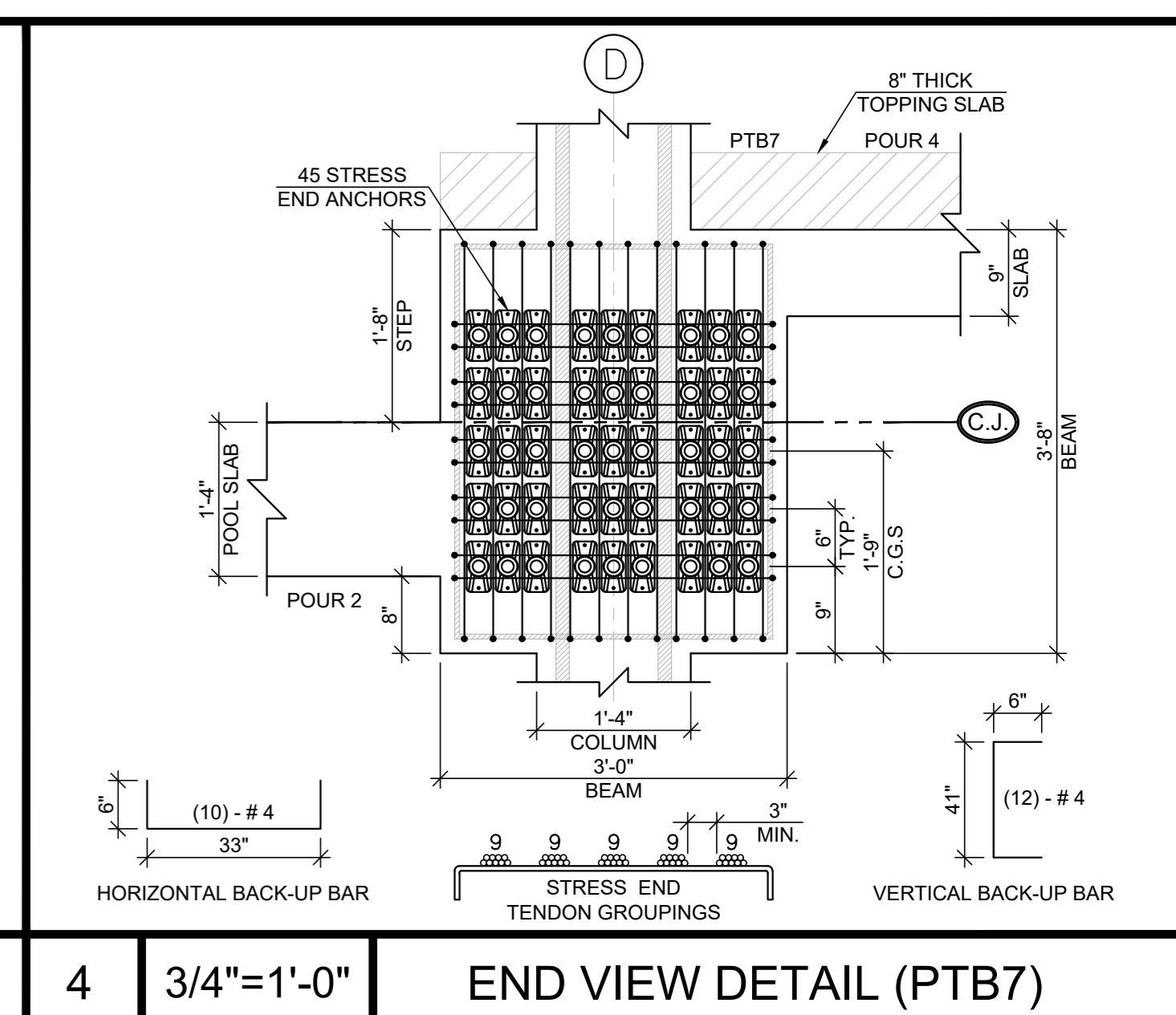
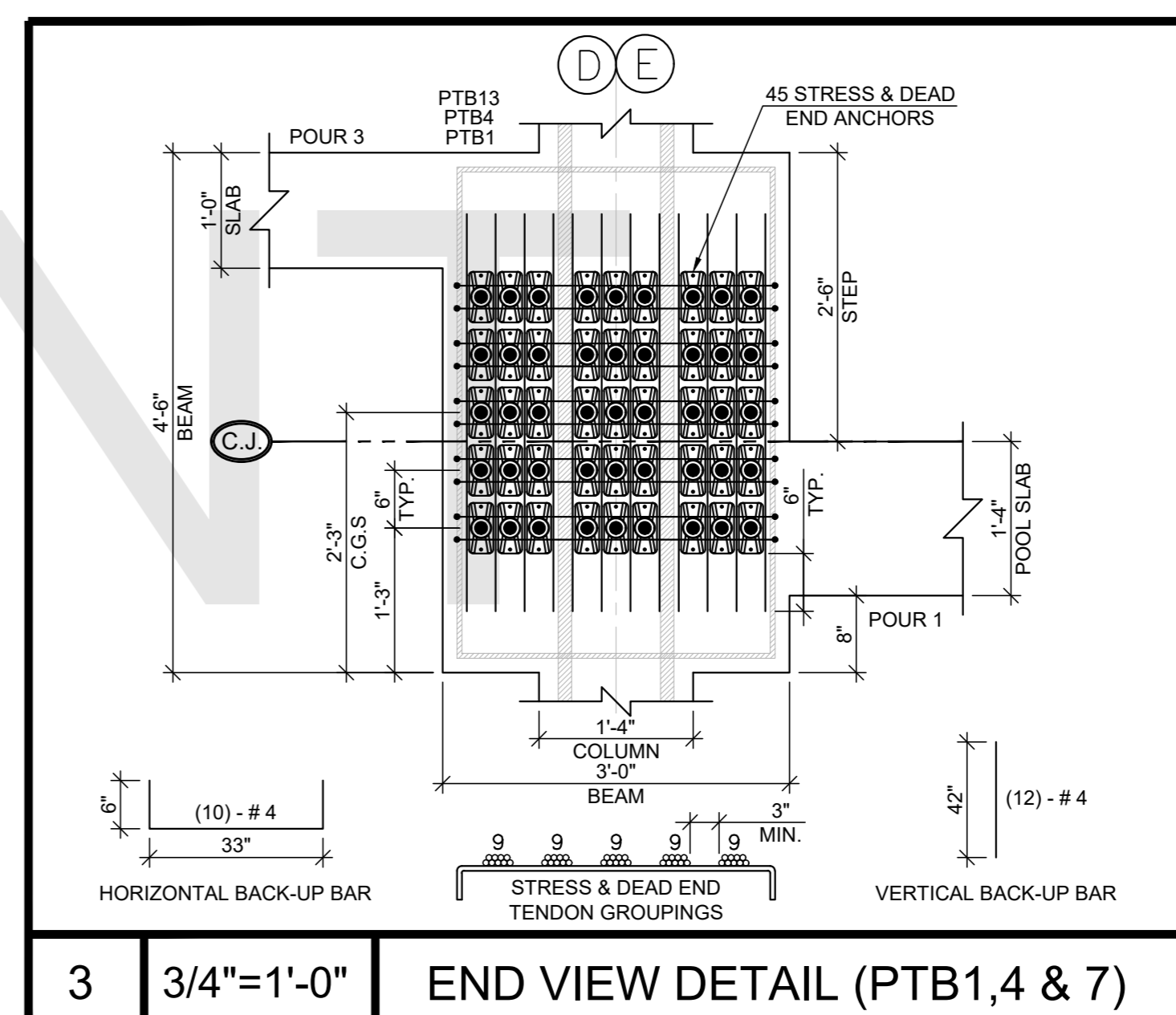
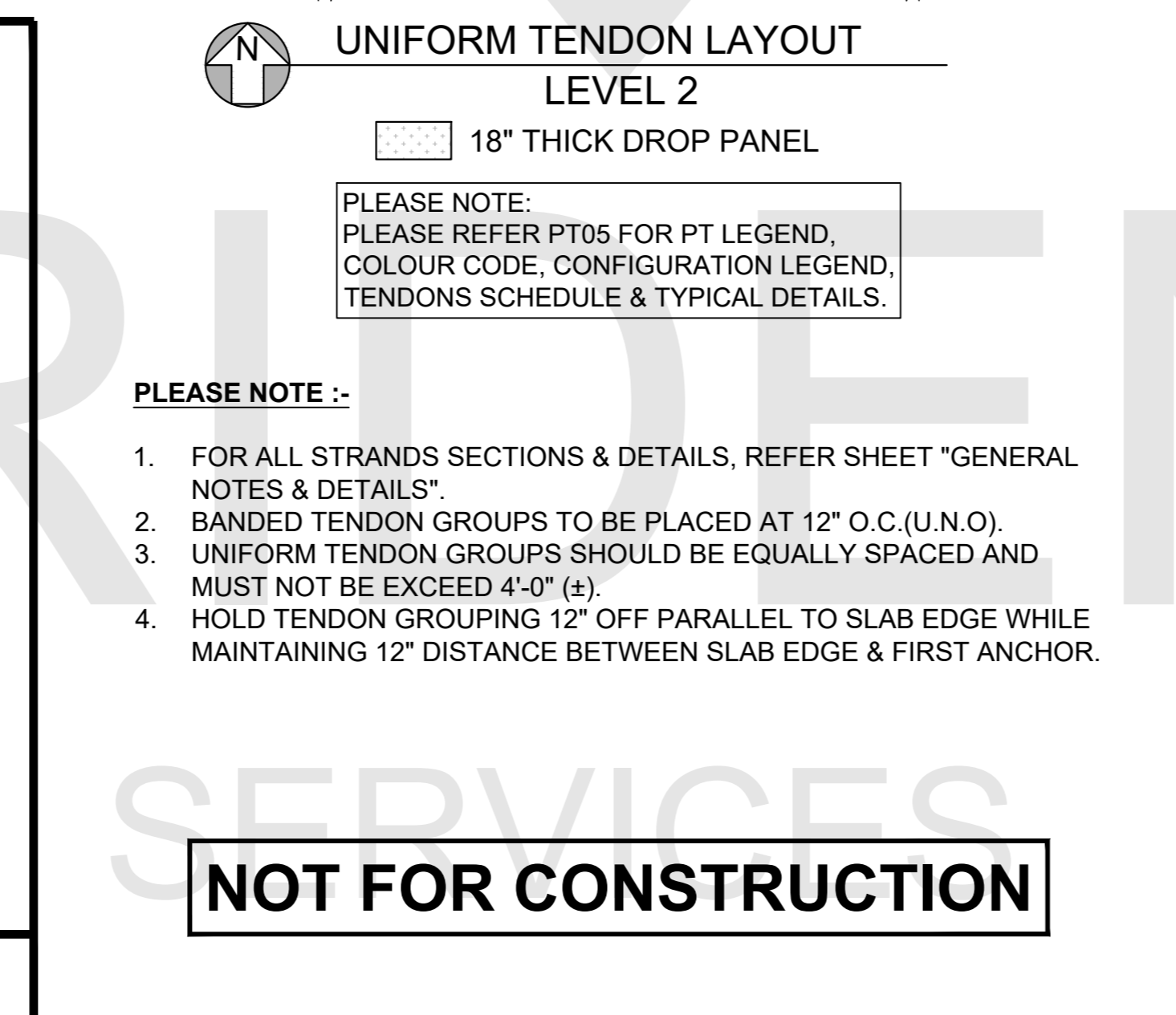
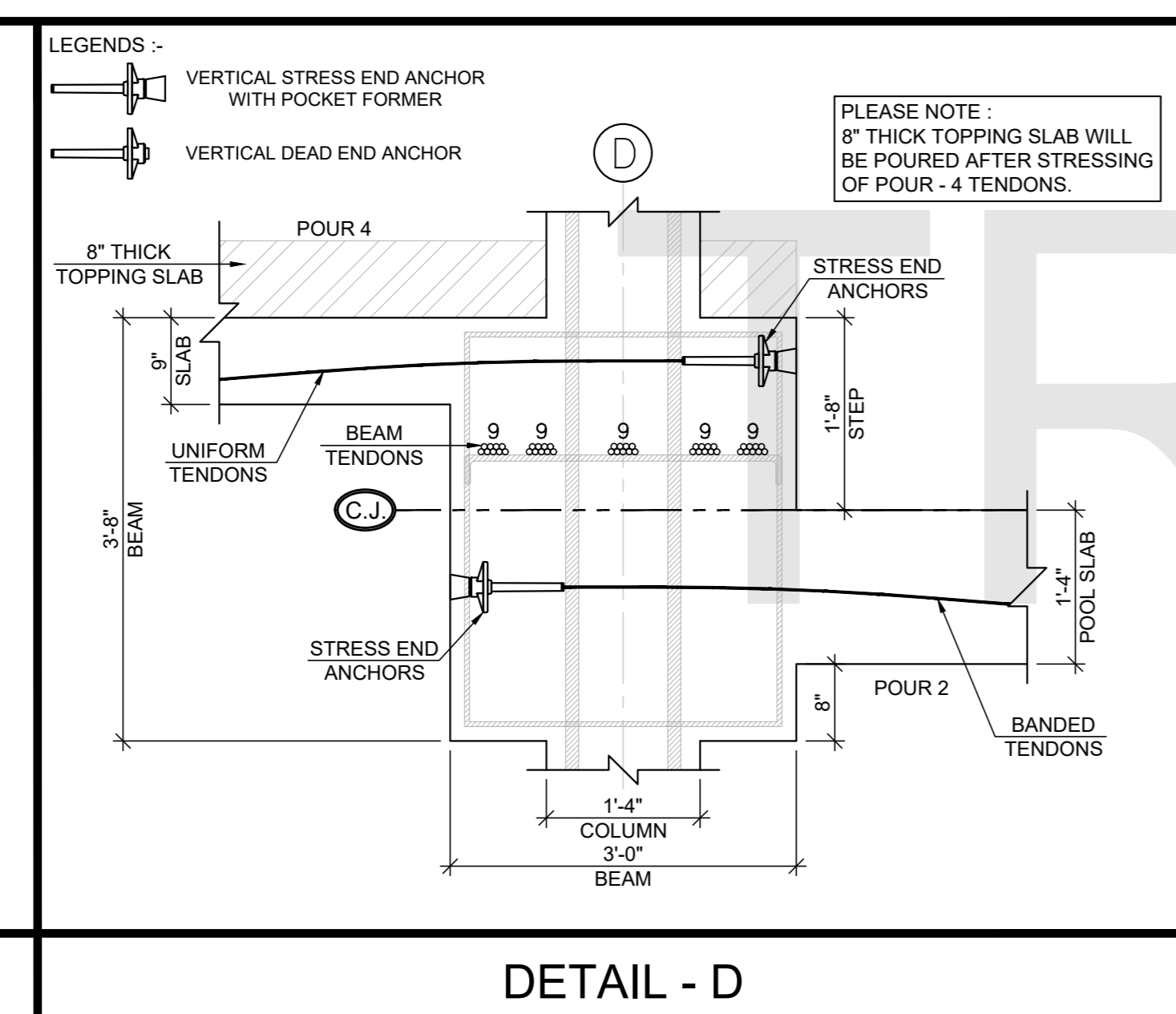
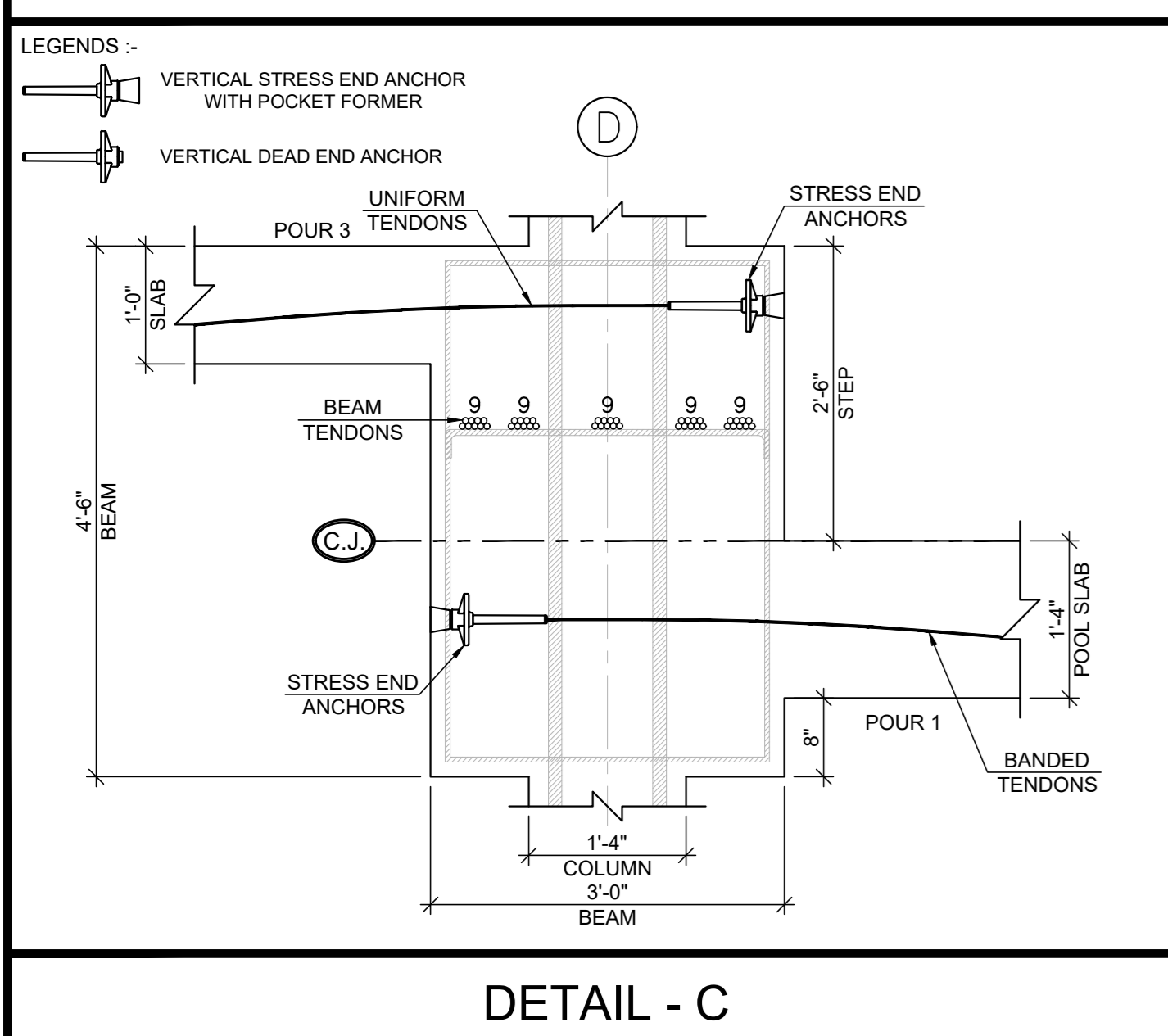
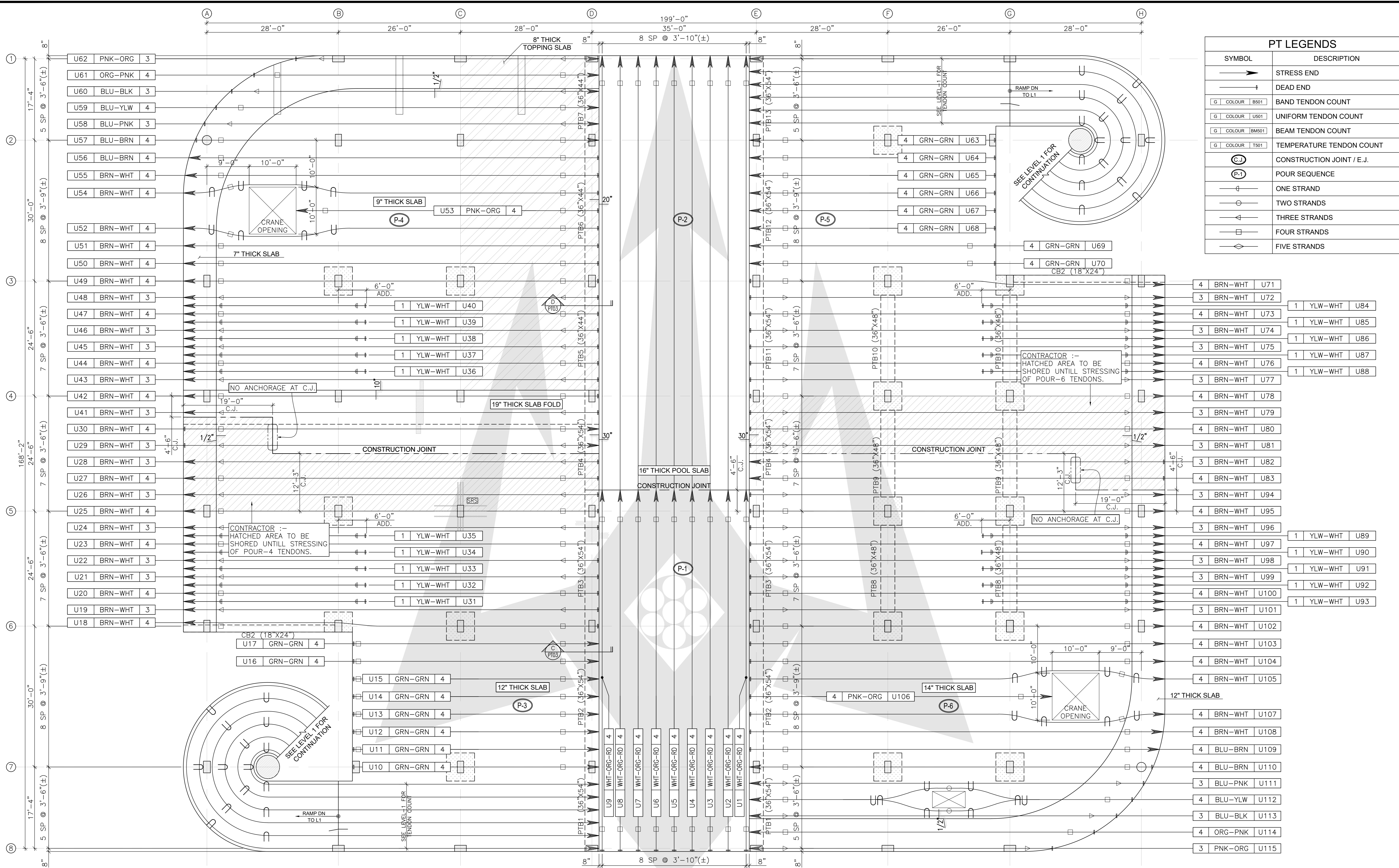


PT LEGENDS	
SYMBOL	DESCRIPTION
	STRESS END
	DEAD END
	BAND TENDON COUNT
	UNIFORM TENDON COUNT
	BEAM TENDON COUNT
	TEMPERATURE TENDON COUNT
	CONSTRUCTION JOINT / E.J.
	POUR SEQUENCE
	ONE STRAND
	TWO STRANDS
	THREE STRANDS
	FOUR STRANDS
	FIVE STRANDS

PLEASE NOTE :-

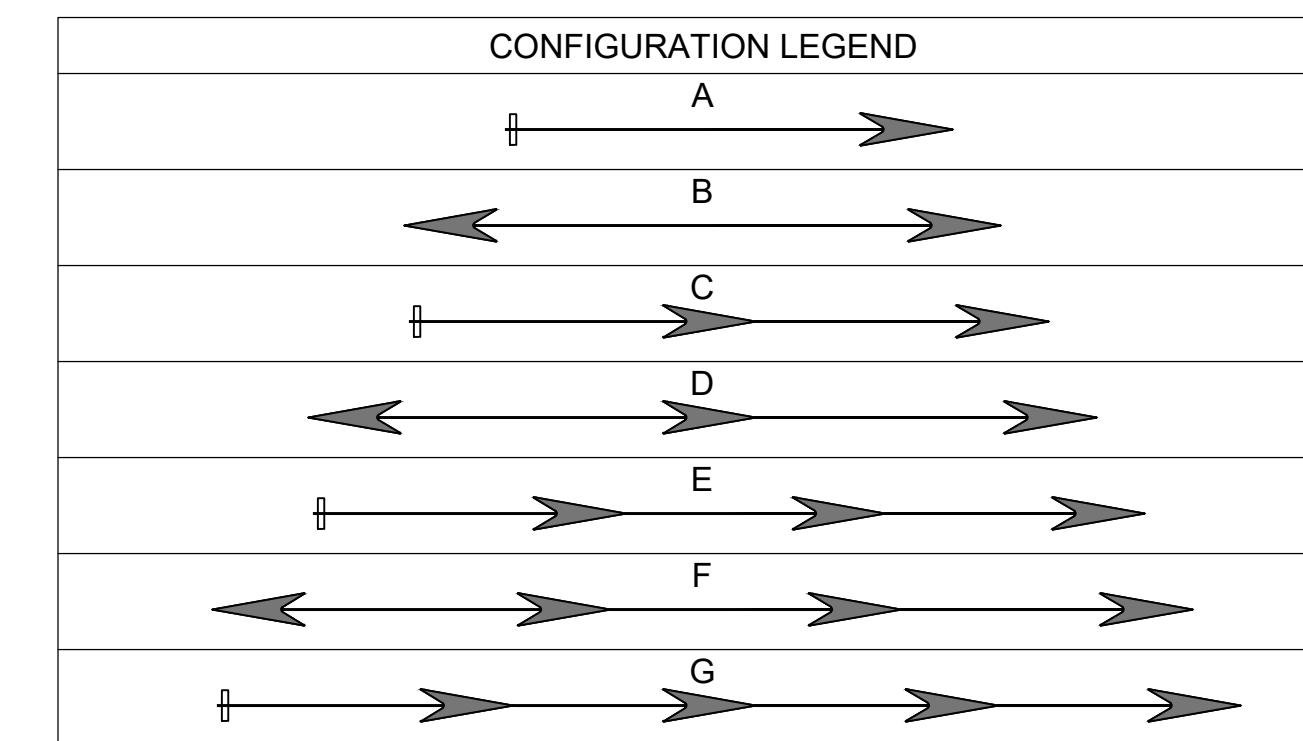
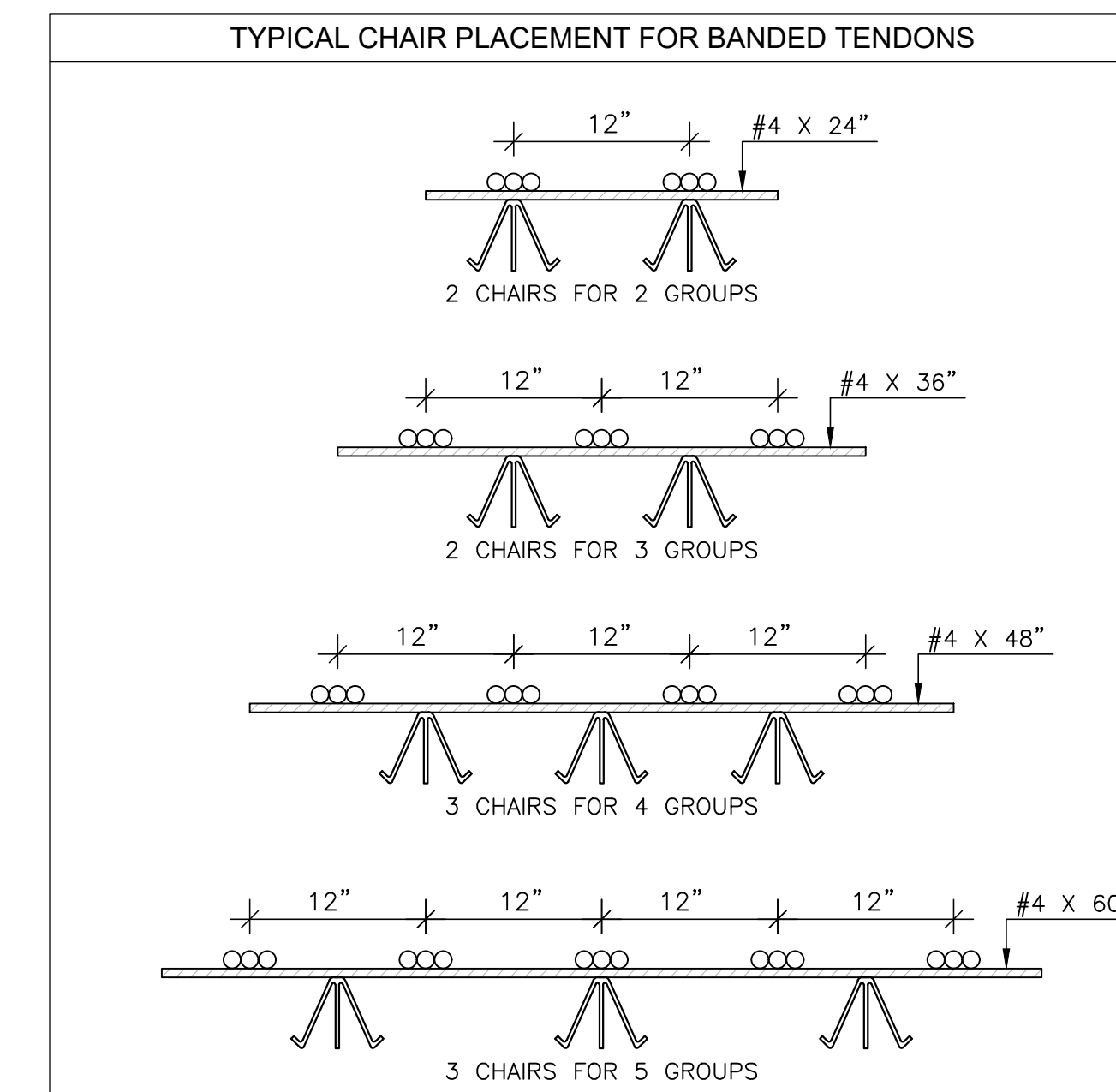
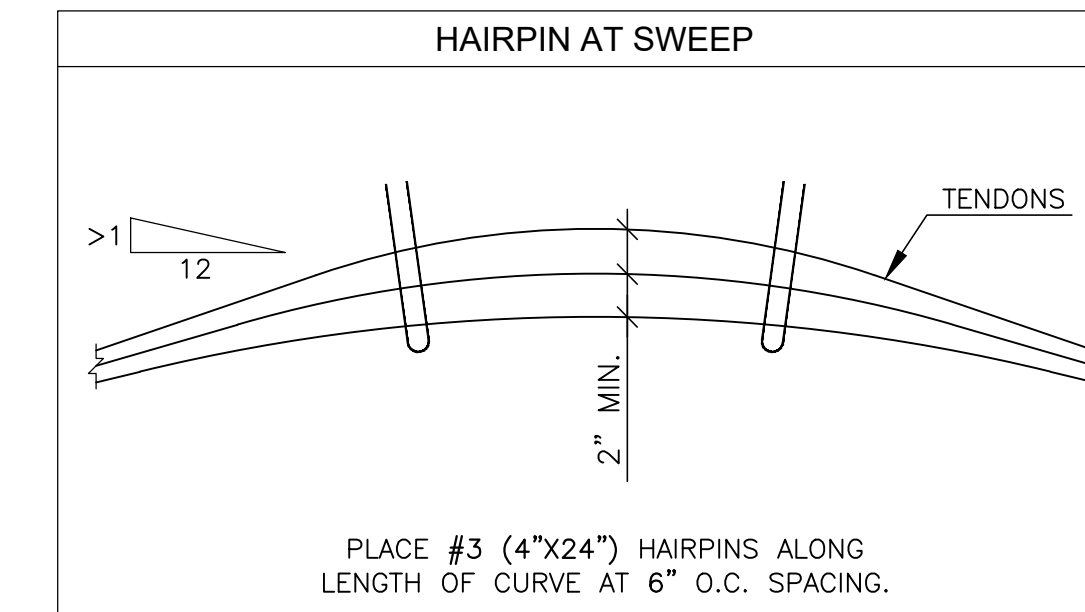
- FOR ALL STRANDS SECTIONS & DETAILS, REFER SHEET "GENERAL NOTES & DETAILS".
- BANDED TENDON GROUPS TO BE PLACED AT 12" O.C. (U.N.O).
- UNIFORM TENDON GROUPS SHOULD BE EQUALLY SPACED AND MUST NOT BE EXCEED 4'-0" (±).
- HOLD TENDON GROUPING 12" OFF PARALLEL TO SLAB EDGE WHILE MAINTAINING 12" DISTANCE BETWEEN SLAB EDGE & FIRST ANCHOR.

NOT FOR CONSTRUCTION



BEAM & BANDED TENDON SCHEDULE								
TENDON COUNT	POUR	COLOUR CODE	CONFIGURATION	QTY. & CUT LENGTH	LENGTH		ELONGATION	
					L1	L2	E1	E2
BM1-BM2	1	WHT-ORG-GRN	->->	90 x 175'-0"	84'-9"	84'-9"	6 7/8"	6 7/8"
B1-B17	1	YLW-WHT	->	61 x 41'-0"	-	-	3"	-
B18-B34	2	YLW-WHT	->	61 x 41'-0"	-	-	3"	-
B35-B36	3	WHT-WHT-WHT	->->	8 x 111'-0"	45'-9"	62'-10"	3 5/8"	4 7/8"
B37-B38	3	WHT-WHT-YLW	->->	8 x 114'-0"	45'-9"	65'-8"	3 5/8"	5 1/8"
B39-B44	3	WHT-RD-PNK	->->	19 x 126'-0"	38'-0"	85'-3"	3"	6 7/8"
B45-B47	3	WHT-ORG-YLW	->->	10 x 174'-0"	84'-10"	86'-2"	6 7/8"	7"
B48-B50	3	WHT-SLV-SLV	->->	10 x 133'-0"	43'-9"	86'-2"	3 3/8"	7"
B51-B53	3	WHT-ORG-SLV	->->	9 x 173'-0"	84'-9"	84'-9"	6 7/8"	6 7/8"
B54-B56	3	WHT-SLV-SLV	->->	10 x 133'-0"	43'-9"	86'-7"	3 1/2"	7"
B57-B65	4	WHT-ORG-YLW	->->	30 x 173'-0"	85'-1"	85'-1"	6 7/8"	6 7/8"
B66-B74	4	WHT-RD-PNK	->->	30 x 126'-0"	38'-0"	85'-1"	3"	6 7/8"
B75-B76	4	WHT-WHT-YLW	->->	4 x 114'-0"	45'-9"	65'-8"	3 5/8"	5 1/8"
B77-B78	4	WHT-WHT-WHT	->->	4 x 111'-0"	45'-9"	62'-10"	3 5/8"	4 7/8"

UNIFORM TENDON SCHEDULE								
TENDON COUNT	POUR	COLOUR CODE	CONFIGURATION	QTY. & CUT LENGTH	LENGTH		ELONGATION	
					L1	L2	E1	E2
U1-U9	1	WHT-ORG-RD	->->	36 x 172'-0"	77'-0"	92'-6"	6 1/4"	7 1/2"
U10-U17	3	GRN-GRN	->->	32 x 55'-0"	-	-	4 1/4"	-
U18-U30	3	BRN-WHT	->	45 x 91'-0"	-	-	7 1/8"	-
U31-U35	3	YLW-WHT	->	5 x 41'-0"	-	-	3 1/8"	-
U36-U40	4	YLW-WHT	->	5 x 41'-0"	-	-	3 1/8"	-
U41-U52	4	BRN-WHT	->	43 x 91'-0"	-	-	7 1/8"	-
U53	4	PNK-ORG	->	4 x 67'-0"	-	-	5 1/8"	-
U54-U55	4	BRN-WHT	->	8 x 91'-0"	-	-	7 1/8"	-
U56-U57	4	BLU-BRN	->	8 x 89'-0"	-	-	7"	-
U58	4	BLU-PNK	->	3 x 86'-0"	-	-	6 7/8"	-
U59	4	BLU-YLW	->	4 x 84'-0"	-	-	6 5/8"	-
U60	4	BLU-BLK	->	3 x 80'-0"	-	-	6 3/8"	-
U61	4	ORG-PNK	->	4 x 76'-0"	-	-	6"	-
U62	4	PNK-ORG	->	3 x 67'-0"	-	-	5 1/4"	-
U63-U70	5	GRN-GRN	->	32 x 55'-0"	-	-	4 1/4"	-
U71-U83	5	BRN-WHT	->	45 x 91'-0"	-	-	7 1/8"	-
U84-U88	5	YLW-WHT	->	5 x 41'-0"	-	-	3 1/8"	-
U89-U93	6	YLW-WHT	->	5 x 41'-0"	-	-	3 1/8"	-
U94-U105	6	BRN-WHT	->	43 x 91'-0"	-	-	7 1/8"	-
U106	6	PNK-ORG	->	4 x 67'-0"	-	-	5 1/8"	-
U107-U108	6	BRN-WHT	->	8 x 91'-0"	-	-	7 1/8"	-
U109-U110	6	BLU-BRN	->	8 x 89'-0"	-	-	7"	-
U111	6	BLU-PNK	->	3 x 86'-0"	-	-	6 7/8"	-
U112	6	BLU-YLW	->	4 x 84'-0"	-	-	6 5/8"	-
U113	6	BLU-BLK	->	3 x 80'-0"	-	-	6 3/8"	-
U114	6	ORG-PNK	->	4 x 76'-0"	-	-	6"	-
U115	6	PNK-ORG	->	3 x 67'-0"	-	-	5 1/4"	-

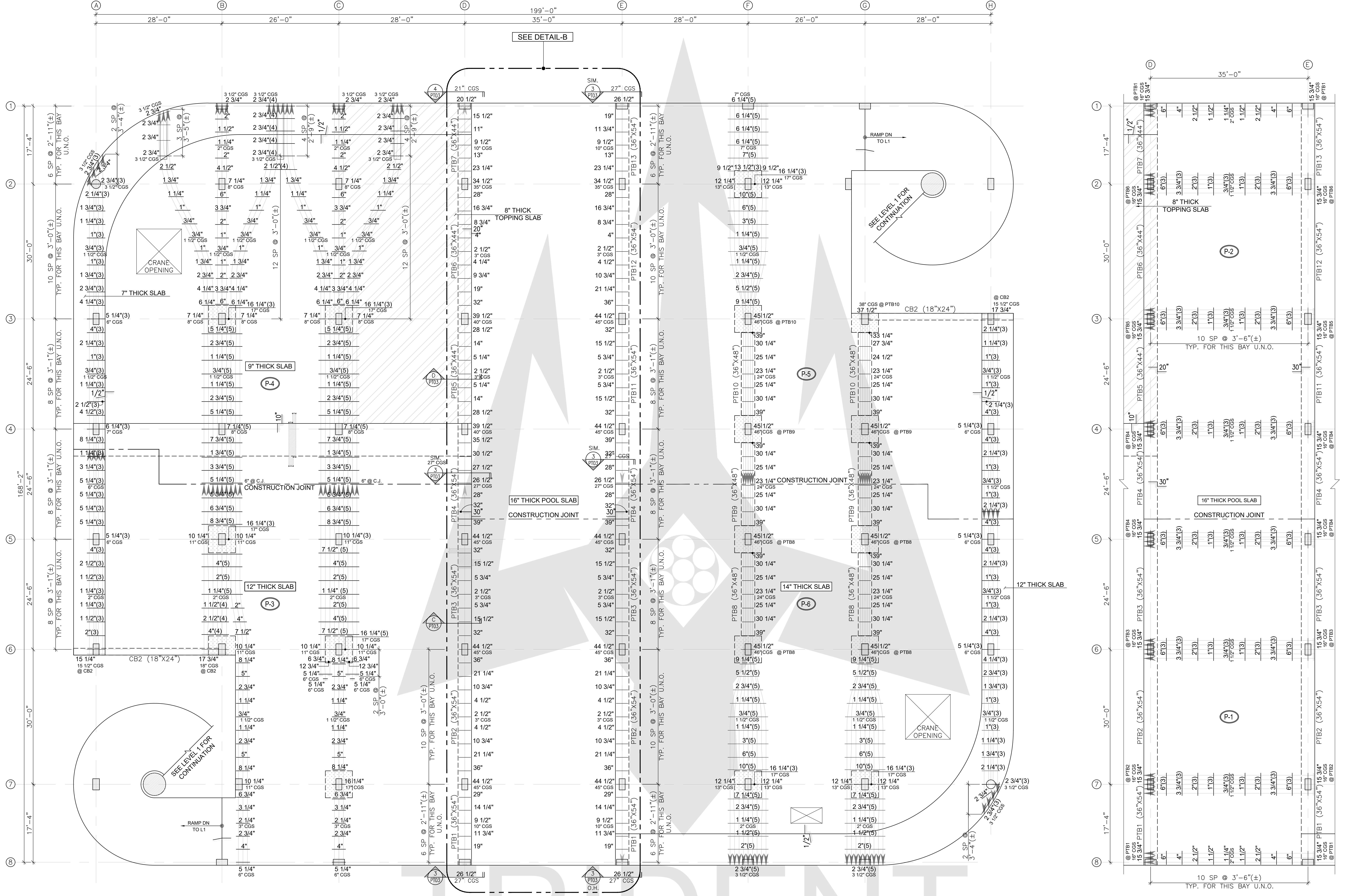


COLOUR CODE		
DIGIT	SYMBOL	COLOUR
0	BLK	BLACK
1	WHT	WHITE
2	RD	RED
3	SLV	SILVER
4	YLW	YELLOW
5	GRN	GREEN
6	PNK	PINK
7	ORG	ORANGE
8	BLU	BLUE
9	BRN	BROWN

PT LEGENDS	
SYMBOL	DESCRIPTION
→	STRESS END
⊥	DEAD END
G COLOUR B501	BAND TENDON COUNT
G COLOUR U501	UNIFORM TENDON COUNT
G COLOUR BM501	BEAM TENDON COUNT
G COLOUR T501	TEMPERATURE TENDON COUNT
(C.J.)	CONSTRUCTION JOINT / E.J.
(P-1)	POUR SEQUENCE
○	ONE STRAND
○	TWO STRANDS
◀	THREE STRANDS
◻	FOUR STRANDS
◊	FIVE STRANDS

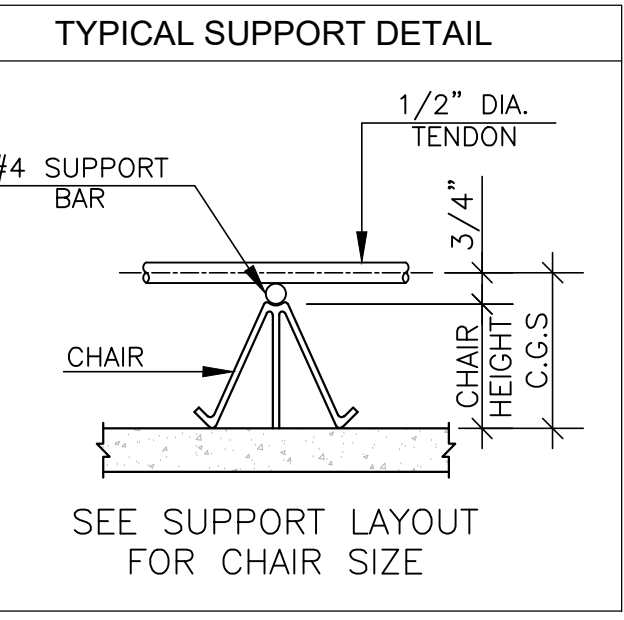
TRIDENT
SERVICES

NOT FOR CONSTRUCTION



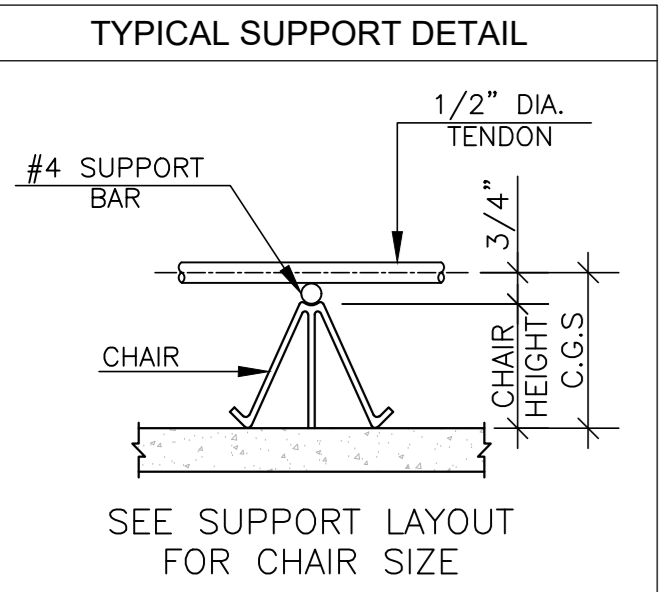
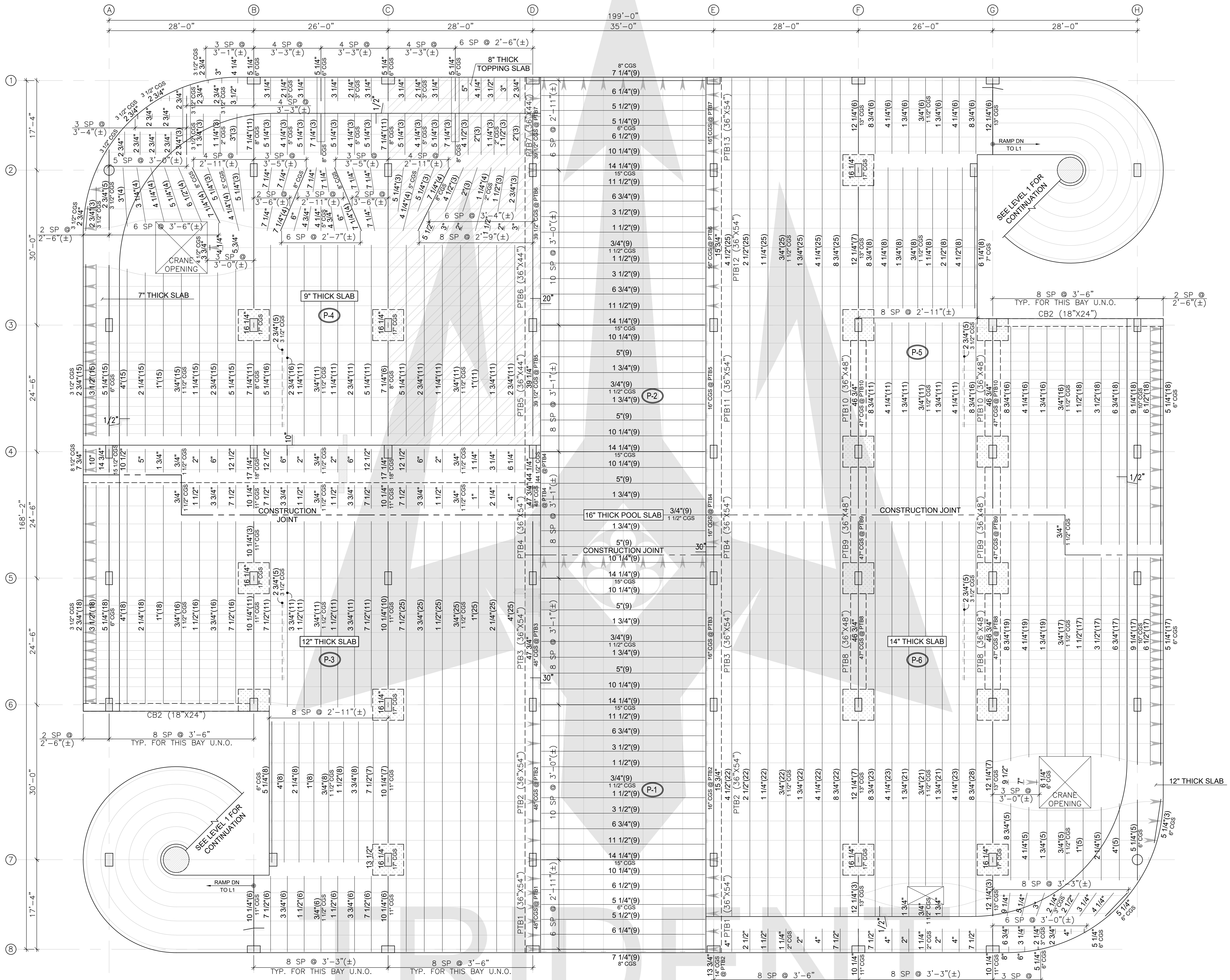
BANDED & BEAM SUPPORT LAYOUT
LEVEL 2

PARTIAL PLAN
POOL SLAB



- PLEASE NOTE :-**
1. REFER SHEET "GENERAL NOTES & DETAILS" ABOUT ALL STANDARDS & INFORMATION.
 2. PLACE # 4 SUPPORT BAR ON THE TOP OF CHAIRS (TYP. U.N.O.).
 3. SPACES NOT DIMENSIONED. USE THE NUMBER OF SPACES SHOWN, SPACED EQUALLY, WITH SPACES NOT TO EXCEED 4'-0".
 4. 8 1/2" INDICATES CHAIR HEIGHT & (2) INDICATED QUANTITIES OF CHAIRS ALONG EQUALLY.
 5. ALL TENDON CHAIR HEIGHTS ARE MEASURED FROM THE BOTTOM OF THE SLAB TO THE BOTTOM OF SUPPORT BAR. IF CHAIR QUANTITY NOT PROVIDED USE MINIMUM 2 CHAIRS.
 6. HOLD SUPPORT BAR 6" OFF SLAB EDGE AT STRESS & DEAD END OR 3" OFF AT BEAM FACE (U.N.O.).

NOT FOR CONSTRUCTION



UNIFORM TENDON SUPPORT LAYOUT
LEVEL 2

- PLEASE NOTE :-**
1. REFER SHEET "GENERAL NOTES & DETAILS" ABOUT ALL STANDARDS & INFORMATION.
 2. PLACE # 4 SUPPORT BAR ON THE TOP OF CHAIRS (TYP. U.N.O.).
 3. SPACINGS NOT DIMENSIONED, USE THE NUMBER OF SPACES SHOWN, SPACED EQUALLY, WITH SPACES NOT TO EXCEED 4'-0".
 4. 8 1/2" INDICATES CHAIR HEIGHT & (2) INDICATED QUANTITY OF CHAIRS ALONG BAR.
 5. ALL TENDON CHAIR HEIGHTS ARE MEASURED FROM THE BOTTOM OF THE SLAB TO THE BOTTOM OF SUPPORT BAR. IF CHAIR QUANTITY NOT PROVIDED USE MINIMUM 2 CHAIRS.
 6. HOLD SUPPORT BAR 6" OFF SLAB EDGE AT STRESS & DEAD END OR 3" OFF AT BEAM FACE (U.N.O.).

NOT FOR CONSTRUCTION